

**JOBMAN**

WORKWEAR

**2025**

Durability at Work Since 1975



FIFTY YEARS OF DURABILITY AT WORK  
EST 1975  
**50**  
JOBMAN  
WORKWEAR



## Contents

Jobman celebrates 50 proud years!	<b>06</b>
New Arrivals SS25'	<b>08</b>
Xenon	<b>16</b>
Oxygen	<b>30</b>
Heritage	<b>40</b>
Flame retardant	<b>54</b>
Jobman Winter	<b>62</b>
Painter & Floorlayer	<b>74</b>
Practical	<b>80</b>
Practical High Visibility	<b>96</b>
Accessories & Kneepads	<b>110</b>
Symbols	<b>118</b>
Washing Instructions	<b>120</b>
Sustainability Work	<b>122</b>
Size Guide	<b>124</b>
Index	<b>126</b>

Our products are sold through a worldwide network of local dealers. You can find all our dealers listed on our website, [www.jobman.co.uk](http://www.jobman.co.uk). For more information about our products or to find your nearest dealer, please contact us.

► [Jobman.co.uk](http://Jobman.co.uk)

## Quality for Proud Professionals Since 1975

Your choice of workwear determines how visible, effective and protected you are at work. Different jobs require workwear with different functionality and durability, and the garments must keep you warm or cool depending on the conditions. Jobman offers a wide range of workwear which can be combined to suit all types of work, both indoors and outdoors, all year round. We speak to users in a wide range of industries to discuss their needs, and convert the knowledge we gain into fully functional workwear adapted to your daily work environment.

Jobman workwear is developed and manufactured for professionals who want the best. Durability has been our watchword since 1975, and so it will always be. At Jobman Workwear, quality isn't just about choosing the right material. The garments must also be comfortable and allow for movement during challenging work. Together with new features and modern design, the clothing also makes you resilient at work. Our vision is for all professionals to be proud wearers of Jobman workwear, every day.

## Quality Workwear Down to the Smallest Detail

When you wear Jobman clothing, you are also wearing years of technical and functional development applied to every detail. Together, these important details create comfortable, easy to wear garments with a modern design and exceptional durability. These are clothes that are well designed using generations of solid expertise. Choosing high-quality, durable clothing is also an economically sound and sustainable decision – the basis for our quality ethos that runs through every garment.

One example is our trousers for craft work, designed to meet the specific needs of craftspeople. Hanging back pockets, reinforced holster pockets and a zipped leg pocket ensure easy access to tools and keep your personal effects secure. The materials have been carefully chosen and combined in various areas of the trousers, cut and sewn to fit the body's natural shape. The result is robust trousers that allow for free movement and ventilation where it matters.



FIFTY YEARS OF DURABILITY AT WORK



EST 1975

50

JOBMAN  
WORKWEAR

## 50 YEARS OF DURABILITY AT WORK.

In 2025, Jobman Workwear marks its 50<sup>th</sup> anniversary, celebrating a journey characterized by innovation, quality, and a deep understanding of the importance of workwear for professional tradespeople. Since its founding in 1975, Jobman Workwear has been a reliable choice for professionals – from construction workers to transport personnel – who value durable clothing adapted to all types of working environments.

### From local to global – Our mission and vision.

Jobman Workwear was founded in Sweden and began manufacturing workwear for some of the most demanding companies, such as the Swedish Forest Agency and Husqvarna. Over time, Jobman has built a global network and continues to develop garments that combine functionality with user safety and security. Our vision is to create clothing that gives every user a sense of safety and pride in their work, no matter where they are in the world.

Core values and innovation-driven development. Our core values – authentic, reliable, and down-to-earth – permeate everything we do. These values ensure that each garment not only meets but exceeds our users' expectations for durability and efficiency. With a forward-looking approach, we have introduced numerous innovative solutions over the years, from durable materials to ergonomic and protective details that enhance workplace safety.

**"Half a century of  
quality and durability  
at work."**

Our motto, "Durability at Work," is more than just a slogan – it is a promise of durability and quality in every seam.

### Jobman Workwear today & in the future.

For 50 years, Jobman Workwear has not only created workwear but also built trust and relationships with its customers. Today, we continue to lead the way in developing workwear for tomorrow's professionals. With a strong emphasis on sustainability and respect for our surroundings, we will continue to create solutions that help our customers work safely and effectively in a changing world.

Thank you to all our customers who have been part of our journey so far. We look forward to continuing to offer durable, functional, and reliable workwear that inspires pride in every professional user.

### Jobman Workwear – 50 years of sustainability and reliability at work.

**JOBMAN**  
WORKWEAR

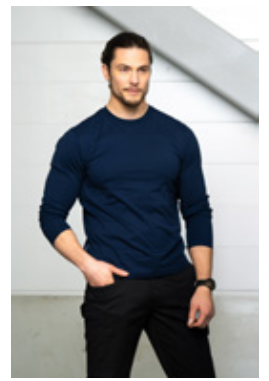
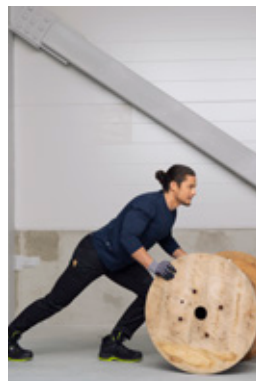






## New Arrivals SS25'

Jobman continues to develop workwear for professionals. In 2025, we are introducing new garments that combine high functionality with modern design, created to meet today's professional standards. This collection features improved materials for enhanced durability, smart solutions, and optimized comfort for the workday. Discover our new products and experience why Jobman has been the obvious choice for half a century.





**NEW!**



**5120 Sweatshirt**

65512010 - XXS-3XL

Round neckline sweater. Terry inside. Crescent reinforced in neck. Ribbing at hem and cuffs. Oeko-tex certifierad.

100% cotton, 300 g/m<sup>2</sup>.



6700

Navy



9800

Dark Grey



9900

Black







NEW!



### 5130 Long Sleeved T-Shirt

65513012- XXS - 4XL

Unisex long-sleeved T-shirt in soft organic cotton.

100% cotton, 180 g/m<sup>2</sup>.



6700

Navy



9800

Dark Grey



9900

Black



NEW!

MADE IN GREEN

STANDARD 100  
Oeko TEX  
IS 100-200  
www.oeko-tex.com



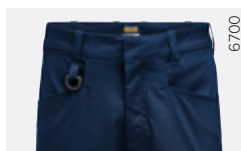
**2302 Service Trousers Stretch**  
**2303 Women's Service Trousers Stretch**

65230224 - C44-C62, D88-D124

65230324 - 32-50

Stretch service pants. Hidden button at the front for a "Non-scratch" design. Leg pocket on the right side with space for a tape measure and leg pocket on the left side with a flap pocket for pens. D-ring on the front belt loop for an ID card holder. Knee protection pocket on the inside.

63% Polyester, 34% Cotton, 3% Stretch



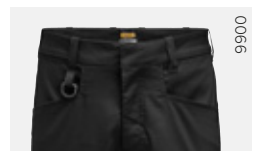
Navy

6700



Dark Grey

9800



Black

9900



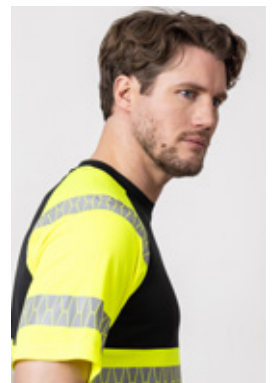
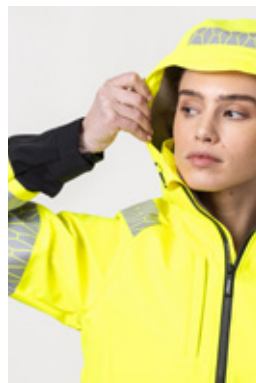
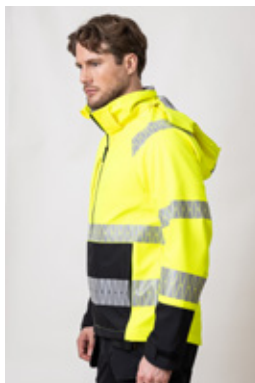
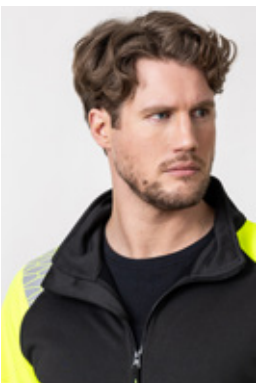






## Xenon

Xenon is Jobman's family of workwear designed for those who require high visibility and reliable safety gear on the job site. With carefully selected materials that combine durability and comfort, Xenon meets the needs of today's professionals. The latest additions include t-shirts, sweatshirts, and a new softshell jacket, all certified according to EN ISO 20471 for increased visibility and protection. With contrasting black and gray reinforcements and sleek Delrin zippers, Xenon offers both style and safety. We have even launched hi-vis co-certification that allows for combining products to achieve higher safety classifications. Check out the table on the next page for more information.





## Jobman High-visibility co-certification

**T3** + **B3** = **CLASS 3**  
Example of co-certification

EN20471	
<b>Class 3</b>	Reflectives; 0,2 m <sup>2</sup> Hi-vis; 0,8 m <sup>2</sup>
<b>Class 2</b>	Reflectives; 0,13 m <sup>2</sup> Hi-vis; 0,5 m <sup>2</sup>
<b>Class 1</b>	Reflectives; 0,10 m <sup>2</sup> Hi-vis; 0,14 m <sup>2</sup>

**T1**

**Style 5226 - Size XXS**  
Reflectives; 0,13 m<sup>2</sup>  
Hi-vis; 0,21 m<sup>2</sup>  
Cert. no  
0598/PPE/24/2095

**T2**

**Style 5224 - Size XXS**  
Reflectives; 0,17 m<sup>2</sup>  
Hi-vis; 0,17 m<sup>2</sup>  
Cert. no  
0598/PPE/24/2095

**Style 5225 - Size XXS**  
Reflectives; 0,17 m<sup>2</sup>  
Hi-vis; 0,17 m<sup>2</sup>  
Cert. no  
0598/PPE/24/2095

**T3**

**Style 5326 - Size XXS**  
Reflectives; 0,15 m<sup>2</sup>  
Hi-vis; 0,58 m<sup>2</sup>  
Cert. no  
0598/PPE/24/2095

**B1**

**Style 2328 - Size C44**  
Reflectives; 0,11 m<sup>2</sup>  
Hi-vis; 0,15 m<sup>2</sup>  
Cert. no  
0598/PPE/23/3623

**Style 2329 - Size C32**  
Reflectives; 0,11 m<sup>2</sup>  
Hi-vis; 0,15 m<sup>2</sup>  
Cert. no  
0598/PPE/23/3623

**B2**

**Style 2392 - Size C44**  
Reflectives; 0,12 m<sup>2</sup>  
Hi-vis; 0,16 m<sup>2</sup>  
Cert. no  
0598/PPE/23/3623

**Style 2372 - Size C34**  
Reflectives; 0,12 m<sup>2</sup>  
Hi-vis; 0,17 m<sup>2</sup>  
Cert. no  
0598/PPE/23/3623


TOPS						
BOTTOMS	COMBINED EN ISO 20471	T1	T2	T3	T4	T5
	<b>B1</b>	1	1	2	2	3
	<b>B2</b>	1	1	2	3	3
	<b>B3</b>	2	2	3	3	3
	<b>B4</b>	2	2	3	3	3
	<b>B5</b>	3	2	3	3	3

**T4**



**Style 1377 - Size XS**  
 Reflectives; 0,19 m<sup>2</sup>  
 Hi-vis; 0,64 m<sup>2</sup>  
 Cert. no  
 0598/PPE/24/2095

**T5**



**Style 1376 - Size XS**  
 Reflectives; 0,21 m<sup>2</sup>  
 Hi-vis; 0,77 m<sup>2</sup>  
 Cert. no  
 0598/PPE/24/2095

**Style 5324 - Size XXS**  
 Reflectives; 0,19 m<sup>2</sup>  
 Hi-vis; 0,70 m<sup>2</sup>  
 Cert. no  
 0598/PPE/24/2095

**Style 5325 - Size XXS**  
 Reflectives; 0,19 m<sup>2</sup>  
 Hi-vis; 0,73 m<sup>2</sup>  
 Cert. no  
 0598/PPE/24/2095

**B3**




**Style 2296 - Size C44**  
 Reflectives; 0,13 m<sup>2</sup>  
 Hi-vis; 0,36 m<sup>2</sup>  
 Cert. no  
 0598/PPE/22/3315

**B4**



**Style 2217 - Size C44**  
 Reflectives; 0,14 m<sup>2</sup>  
 Hi-vis; 0,48 m<sup>2</sup>  
 Cert. no  
 0598/PPE/23/2607/R

**B5**



**Style 2291 - Size C44**  
 Reflectives; 0,13 m<sup>2</sup>  
 Hi-vis; 0,66 m<sup>2</sup>  
 Cert. no  
 0598/PPE/22/2164

**Style 2271 - Size C34**  
 Reflectives; 0,13 m<sup>2</sup>  
 Hi-vis; 0,62 m<sup>2</sup>  
 Cert. no  
 0598/PPE/22/3316



Black/Yellow



T1

NEW!



### 5226 T-shirt Hi-Vis

65522651 - XXS-4XL

Comfortable functional T-shirt of quick-dry material keeps your skin dry from moist. Heat-pressed reflective strips, Jobman design. Reflective strips on the shoulders for optimal visibility. Certified Class 1 according to EN ISO 20471

100% Polyester, birdeye knit, 160 g/m<sup>2</sup>



Black/Yellow



T2

NEW!



### 5224 Sweatshirt Hi-Vis

65522467 - XXS-4XL

Comfortable sweatshirt, terry inside. Ribbed neckline, hem and cuffs. Heat-pressed reflective strips, Jobman design. Reflective strips on the shoulders for optimal visibility. Certified Class 1 according to EN ISO 20471.

75% Polyester, 25% Cotton, knitted, terry inside, 280 g/m<sup>2</sup>



Black/Yellow



T2

NEW!



### 5225 Sweatshirt Full-Zip Hi-Vis

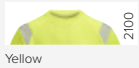
65522567 - XXS-4XL

Comfortable sweatshirt, terry inside. Front zip. Ribbed neckline, hem and cuffs. Heat-pressed reflective strips, Jobman design. Reflective strips on the shoulders for optimal visibility. Certified Class 1 according to EN ISO 20471.

75% Polyester, 25% Cotton, knitted, terry inside, 280 g/m<sup>2</sup>







Yellow



T3

NEW!



**5326 T-shirt Hi-Vis**

65532651 - XXS-4XL

Comfortable functional T-shirt of quick-dry material keeps your skin dry from moist. Heat-pressed reflective strips, Jobman design. Reflective strips on the shoulders for optimal visibility. Certified Class 2/3 according to EN ISO 20471.

100% Polyester, birdeye knit, 160 g/m<sup>2</sup>



Yellow



T5

NEW!



**5324 Sweatshirt Hi-Vis**

65532467 - XXS-4XL

Comfortable sweatshirt, terry inside. Ribbed neckline, hem and cuffs. Heat-pressed reflective strips, Jobman design. Reflective strips on the shoulders for optimal visibility. Certified Class 2/3 according to EN ISO 20471.

75% Polyester, 25% Cotton, knitted, terry inside, 280 g/m<sup>2</sup>



Yellow



T5

NEW!

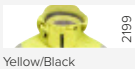


**5325 Sweatshirt Full-Zip Hi-Vis**

65532567 - XXS-4XL

Comfortable sweatshirt, terry inside. Front zip. Ribbed neckline, hem and cuffs. Heat-pressed reflective strips, Jobman design. Reflective strips on the shoulders for optimal visibility. Certified Class 2/3 according to EN ISO 20471.

75% Polyester, 25% Cotton, knitted, terry inside, 280 g/m<sup>2</sup>



Yellow/Black



T4/5

NEW!



**1376 Softshell Jacket Hi-Vis**

65137678 - XS-3XL

**1377 Women's Softshell Jacket Hi-Vis**

65137778 - XS-2XL

Softshell Jacket Hi-Vis with black contrast areas. Removable hood, elastic drawstring around opening. Zipped frontpockets and chest pocket on right side. Inside in bird eye knit gives a good moisture transport. Delrin zip at front with water repellent zip tape. Jacket is adjustable with elastic cord at bottom hem. Prebent sleeves, adjustable at bottom with velcro-straps. Water column: 8000 mm. Breathability: 5000 g/m<sup>2</sup> 24h. Shell fabric has a fluorine-free finish. BIONIC-FINISH® DWR-treatment. Certified according to Oeko-tex.

100% polyester 100D, mechanical stretch, bounded mesh, 260 g/m<sup>2</sup>



Black/Yellow



B1



**2328 Service Trousers Stretch Hi-Vis**

65232870 - C44-62, C146-156, D88-124

**2329 Women's Service Trousers Stretch Hi-Vis**

65232970 - 32-50

Service trousers stretch, EN20471 class 1. Based on service trousers stretch 2318. Spacious front pocket and welted back pockets. Leg pockets with zip, in right one an extra compartment inside for your mobile and pen compartments. Available for women, style 2329.

Material 1: 90% polyamide / 10% elastane, 240 g/m<sup>2</sup>. Material 2: 92% polyester/ 8% elastane, 270 g/m<sup>2</sup>.



Black/Yellow

Detachable pockets



B2



**2392 Craftsman Trousers Stretch Hi-Vis**

65239270 - C44-C62

**2372 Women's Craftsman Trousers Stretch Hi-Vis**

65237270 - D88-D124

Women's trousers in 4-way stretch, EN20471, class 1. Detachable zip-off holster pockets with extra compartments and reinforced inside. These can be tucked into the front pockets. Stretch comfort waistband. Welted back pockets. Hammer loop. Ruler pocket with knife pocket. Leg pocket with covered zip, ID card pouch and phone pocket. Pre-bent knees with kneepad pockets in durable polyamide and with dual-level inner opening, so kneepads can be fitted in two positions for optimal fit. Mesh at back of knee for ventilation. Trousers can be extended with 5 cm turn-up at ankle hem. Certified according to EN 14404:2004+A1:2010 Type 2 Level 1 together with Jobman's kneepads 9943, 9944 and 9945. Certified EN20471, class 1.

90% polyamide/ 10% elastane









Yellow/black

2199

Detachable pockets



B5



**2291 Craftsman Trousers Stretch Hi-Vis**  
**2271 Women's Craftsman Trousers Hi-Vis**

65229160 - C44-62, D88-124  
 65227160 - 34-50

Comfortable hi-vis trousers in 4-way stretch with sections of durable woven fabric at ankle, leg pockets and holster pockets. Detachable zip-off holster pockets with extra compartments and reinforced inside. These can be tucked into the front pockets. Stretch comfort waistband. Welled back pockets. Extra belt loops in largest sizes. Hammer loop. Ruler pocket with knife pocket. Leg pocket with covered zip, ID card pouch and phone pocket. Pre-bent knees with kneepad pockets in durable polyamide and with dual-level inner opening, so kneepads can be fitted in two positions for optimal fit. Reflective strips, Jobman design. Mesh at back of knee for ventilation. Trousers can be extended with 5 cm turn-up at ankle hem. Certified according to EN 14404:2004+A1:2010 Type 2 Level 1 together with Jobman's kneepads 9943, 9944 and 9945. Certified Class 2 according to EN ISO 20471.

92% polyester / 8% elastane, 270 g/m<sup>2</sup>. Material 2: 75% polyester / 25% cotton, 260 g/m<sup>2</sup>. Reinforcement: 100% polyamide, 220 g/m<sup>2</sup>.



Yellow/navy

2167



Yellow/black

2199



Orange/navy

3167



B4

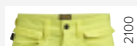


**2217 Pirate Shorts Hi-Vis**

65221762 - C44-62, D84-124

Pirate shorts, class 1 hi-vis in C44 and D84-88 sizes. Certified Class 2 from C46 and from D92. Spacious holster pockets with extra compartment that can be tucked into front pockets. Bellowed back outer pockets. Spacious leg pocket with zip, ID card pouch and mobile pocket. Hammer loop, ruler pocket with knife pocket. Two-position pre-bent knees with kneepad pockets in hard-wearing FA™. Extra belt loops in largest sizes. Polyamide reinforcements. Certified according to EN 14404:2004+A1:2010 Type 2 Level 1 together with Jobman's kneepads 9943, 9944 and 9945. Certified Class 2 according to EN ISO 20471 – Size C46-62, D92-124. Certified Class 1 according to EN ISO 20471 – Size C44, D84-88. Oeko-Tex.

75% polyester / 25% cotton, 260 g/m<sup>2</sup>.



Yellow

2100



B3



**2296 Craftsman Shorts Stretch Hi-Vis**

65229660 - C44-62

Hi-vis shorts in 4-way stretch with sections of durable woven fabric at leg pockets and holster pockets. Detachable zip-off holster pockets with extra compartments and reinforced inside. These can be tucked into the front pockets. Stretch comfort waistband. Welled back pockets. Hammer loop. Ruler pocket with knife pocket. Leg pocket with covered zip, ID card pouch and phone pocket. Reflective strips, Jobman design. Certified Class 1 according to EN ISO 20471, C44-C48. Certified Class 2 according to EN ISO 20471, ≤C50. Oeko-Tex.

92% polyester / 8% elastane, 270 g/m<sup>2</sup>. Material 2: 75% polyester / 25% cotton, 260 g/m<sup>2</sup>. Reinforcement: 100% polyamide, 220 g/m<sup>2</sup>.



**1235 Winter Jacket Hi-Vis**

65123542 - XS-3XL

Warm padded, wind and waterproof jacket with good breathability in 2-layer construction, with taped seams. Reinforcement with Oxford polyester. Seamless soft reflective strips featuring Jobman design. Front zip with double storm flap, protects against cold air and prevents rain penetration. Soft, comfortable pile on the inside of collar and inside over shoulders. Ventilation at back yoke. Removable hood with drawstring and snap fasteners. Adjustable drawstring at hem, slightly longer at back. Soft ribbed cuffs with thumb grip on the inside and adjustable on outside with velcro. Two generous chest pockets with zips, one with Napoleon pocket under the storm flap. D-ring for ID card holder in right chest pocket. Two spacious front pockets with hidden zip. Two mesh inner pockets for e.g. gloves. Water column: 11000 mm. Breathability: 6000 g/m<sup>2</sup> 24h. Shell fabric has a fluorine-free finish. BIONIC-FINISH® DWR-treatment. Certified in Hi-vis, class 3 according EN ISO 20471. Certified according to EN 342 for protection against cold. Certified according to EN 343 for rainwear. Certified according Oeko-tex.

100% Polyester, 164g/m<sup>2</sup>. Reinforcement: 100% Polyester, 218g/m<sup>2</sup>.



Yellow/Black

Detachable braces



### 2235 Winter Trousers Hi-Vis

65223542 - XS-3XL

Warm padded, wind and waterproof trousers with good breathability in 2-layer construction with taped seams. Seamless soft reflective strips featuring Jobman design. Detachable braces, with zipper at the back and velcro at the front. Also adjustable with elastic at waist. Extra warm and comfortable micro fleece lining at seat. Spacious front pockets. Left leg pocket with ID-card holder and mobile compartment. Ruler pocket on the right side. Pre-bent legs with knee protection pockets. Hammer loop on right side back from waistband. Drawstring at ankle prevent cold draughts. Strap with a push button for the possibility of attaching trousers to shoe. Zipper up to the knee simplifies dressing. Water column: 11000 mm. Breathability: 6000 g/m<sup>2</sup> 24h. Shell fabric has a fluorine-free finish. BIONIC-FINISH® DWR-treatment. Certified in Hi-vis, class 2 according to EN ISO 20471 – Sizes XS – 3XL. Certified according to EN 342 for protection against cold. Certified according to EN 343 for rainwear.

100% Polyester, 164g/m<sup>2</sup>. Reinforcement: 100% Polyester, 218g/m<sup>2</sup>.



Yellow/black

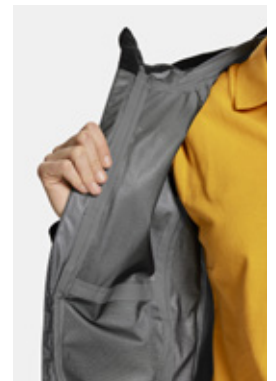
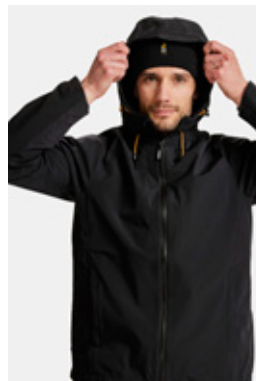


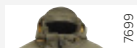


## Oxygen

Jobman Oxygen is workwear specifically designed for use in a professional environment, such as a construction site, outdoor work, workshops, or other settings. The clothing is made from durable materials that can withstand wear and tear and provide protection against work-related challenges. Jobman's professional workwear ensures that users are safe, comfortable, and can perform their tasks efficiently.

The Jobman Oxygen collection is inspired by oxygen. Oxygen is vital for life on Earth. It plays an important role in the combustion of nutrients in our bodies and provides us with energy. Oxygen is necessary to maintain cell function and support biological processes such as metabolism and the immune system. Jobman Oxygen - Oxygen for the work life.





7699

Olive green/black



9899

Dark grey/black



9900

Black



### 1391 Softshell Jacket 1372 Softshell Jacket Woman

65139176 - XS-3XL

65137276 - XS-2XL

Softshell jacket with reinforcement/ contrasts on sleeves and chest pocket. Removable hood, elastic drawstring around opening. Zipped frontpockets and chest pocket on right side. Inside in bird eye knit gives a good moisture transport. Delrin zip at front with water repellent zip tape. Jacket is adjustable with elastic cord at bottom hem. Prebent sleeves, adjustable at bottom with velcro-straps. Water column: 3000 mm. Breathability: 3000 g/m<sup>2</sup> 24h. Shell fabric has a fluorine-free finish. BIONIC-FINISH® DWR-treatment. Certified according Oeko-tex 92% Polyester, 8% Elastane, inside in "birdeye knit" 100% Polyester, 260 g/m<sup>2</sup>. Fabric 2: 100% Nylon, 260 g/m<sup>2</sup>.



9900

Black



### 1374 Shell Jacket 1375 Shell Jacket Woman

65137448 - XS-3XL

65137548 - XS-2XL

Waterproof shell jacket in 4-way stretch and taped seams. Reinforcement / contrasts on sleeves. Fixed hood, elastic drawstring around opening. Zipped frontpockets and chest pocket on right side. Delrin zip at front with water repellent zip tape. Jacket is adjustable with elastic cord at bottom hem. Prebent sleeves, adjustable at bottom with velcro-straps. Water column: 10,000 mm. Breathability: 5000 g/m<sup>2</sup> 24h. Shell fabric has a fluorine-free finish. BIONIC-FINISH® DWR-treatment. Certified according Oeko-tex. EN343 certified. 86% Polyamid, 14% Elastan, 170 g/m<sup>2</sup>. Fabric 2: 100% Polyamid, 170 g/m<sup>2</sup>.



9900

Black



9930

Black/orange



### 5161 Pile Jacket

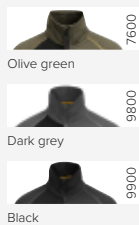
65516157 - XS-3XL

Pile jacket with woven fabric at elbows and chest pocket. Zipped front pockets. Chest pocket is suitable for print/logo. Elasticated edging in contrast colour at front, around collar and cuffs. Adjustable drawstring at hem. 100% polyester, 305 g/m<sup>2</sup>.









**5141 Sweatshirt Full-Zip**

65514195 - XS-3XL

Sweatshirt, full-zip with raglan sleeves. Brushed inside gives good comfort. Zipped chest pocket on right side. Delrin zip at front with water repellent zip tape. Orange contrast tape at neckhole. Orange flatlock seams at raglan (only for color 7600 Olive green). Decorative fabric label on right sleeve (only on color 7600 Olive green). Certified according Oeko-tex.

60% Cotton, 40% Polyester 280 g/m<sup>2</sup>.



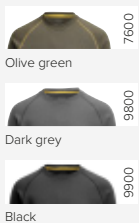
**5158 Flex Jacket**  
**5178 Women's Flex Jacket**

65515856 - XS-3XL

65517856 - XS-2XL

Jacket in polyester with brushed inside, recommended as middle layer (Layer 2). Front zip with contrast colour and with storm flap. Modern fit. Hidden zip in front pockets. Mesh fabric in pockets for extra ventilation. Thumb grip in cuffs.

100% polyester, 215 g/m<sup>2</sup>.

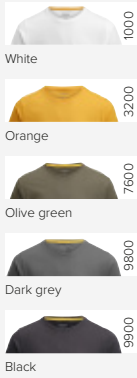


**5140 Sweatshirt**

65514095 - XS-3XL

Sweatshirt with raglan sleeves. Brushed inside gives good comfort. Orange contrast tape at neckhole. Orange flatlock seams at raglan (only for color 7600 Olive green). Decorative fabric label on right sleeve (only on color 7600 Olive green). Certified according Oeko-tex.

60% Cotton, 40% Polyester, 280 g/m<sup>2</sup>.

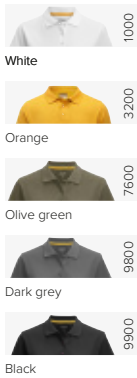


**5268 T-Shirt**

65526814 - XS-3XL

T-shirt in single jersey, combed, ringspun, preshrunk quality. Neckribb in 95% cotton, 5% elastane. Decorative fabric label on right sleeve (only on color 7600 Olive green). Certified according Oeko-tex.

100% Cotton, 160 g/m<sup>2</sup>.



**5566 Polo Shirt**  
**5567 Polo Shirt Woman**

65556615 - XS-3XL

65556715 - XS-2XL

Polo shirt, single lacost knit with 5 pcs, tone-in tone buttons at front placket. Slit at sides. Collar and bottom sleeves in rib. Orange contrast tape at neckhole and slit at sides. Decorative fabric label on right sleeve (only on color 7600 Olive green). Certified according Oeko-tex.

100% Cotton, 200 g/m<sup>2</sup>.



NEW COLOUR!



Detachable pockets

**2391 Craftsman Trousers Stretch**  
**2371 Women's Craftsman Trousers Stretch**

65239170 - C44-62, D88-124

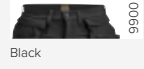
65237170 - 34-50

Women's trousers in 4-way stretch with sections of durable woven fabric at ankle. Leg pockets and holster pockets. Detachable zip-off holster pockets with extra compartments and reinforced inside. These can be tucked into the front pockets. Stretch comfort waistband. Welted back pockets. Hammer loop. Ruler pocket with knife pocket. Leg pocket with covered zip, ID card pouch and phone pocket. Pre-bent knees with kneepad pockets in durable polyamide and with dual-level inner opening, so kneepads can be fitted in two positions for optimal fit. Mesh at back of knee for ventilation. Trousers can be extended with 5 cm turn-up at ankle hem. Certified according to EN 14404:2004+A1:2010 Type 2 Level 1 together with Jobman's kneepads 9943, 9944 and 9945.

90% polyamide, 10% elastane, 240 g/m<sup>2</sup>. Material 2: 100% polyamide, 210 g/m<sup>2</sup>. Reinforcement: 100% polyamide, 220 g/m<sup>2</sup>.







Black

Detachable pockets



**2397 Craftsman Shorts Stretch**

65239770 - C44-62

Shorts in 4-way stretch with sections of durable woven fabric at leg pockets and holster pockets. Detachable zip-off holster pockets with extra compartments and reinforced inside. These can be tucked into the front pockets. Stretch comfort waistband. Welled back pockets. Hammer loop. Ruler pocket with knife pocket. Leg pocket with covered zip, ID card pouch and phone pocket.

90% polyamide, 10% elastane, 240 g/m<sup>2</sup>. Material 2: 100% polyamide, 210 g/m<sup>2</sup>. Reinforcement: 100% polyamide, 220 g/m<sup>2</sup>.



Navy

Black



NEW COLOUR!



**2318 Service Trousers Stretch**

65231870 - C44-62,

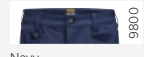
**2319 Women's Service Trousers Stretch**

C146-156, D88-124

65231970 - 32-50

Service trousers in comfortable 4-way stretch in polyamide/elastane fabric with a slim fit. Spacious front pocket and welled back pockets. Leg pocket with zip, an extra compartment inside for your mobile and pen compartments.

90% polyamide/10% elastane, 240 g/m<sup>2</sup>.



Navy

Black



NEW COLOUR!



**2718 Service Shorts Stretch**

65271870 - C44 - C62

**2719 Women's Service Shorts Stretch**

65271970 - D32 - D50

Service shorts in comfortable 4-way stretch in polyamide/elastane fabric with a slim fit. Spacious front pocket and welled back pockets. Leg pocket with zip, an extra compartment inside for your mobile and pen compartments. A

90% polyamide/10% elastane, 240 g/m<sup>2</sup>



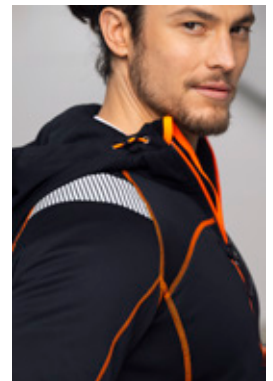
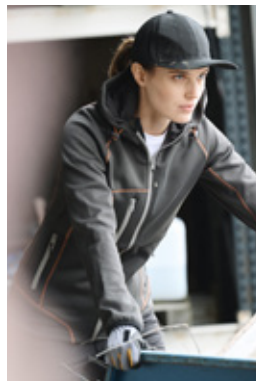
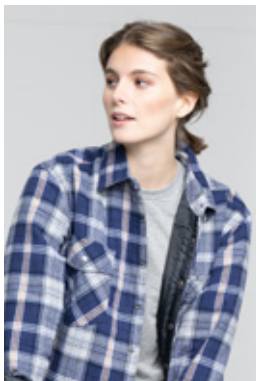




## Heritage

A Legacy of Sustainability and Innovation - In celebration of Jobman Workwear's 50<sup>th</sup> anniversary, we are proud to introduce our Heritage family – a collection that reflects half a century of groundbreaking product development and commitment to durable workwear. Each garment in the Heritage family tells the story of our journey and our legacy, where "Durability at Work" has always been the foundation of everything we do.

This family consists of carefully selected products that represent our long tradition of quality and functionality, designed to meet the demands of generations of professionals. Inspired by our history yet relevant to today's workplaces, the garments in the Heritage family carry our legacy forward – as durable and relevant today as they were in the past, where experience meets the demands of the future.





Black/yellow

9921



### 1179 Winter Jacket

65117913 - S-3XL

Pile lining on body, quilt lined sleeves. Right chest pocket with flap and phone pocket. Left chest pocket with extra compartments. Hand warmer pockets under chest pockets. Generous front pockets. Inside phone pocket. Double inner pockets. Extended back and adjustable waist and sleeves. Zip with storm flap extending to top of collar. High visibility fabric on yoke and reflectives on sleeves.

100% cotton, 300 g/m<sup>2</sup>.



Red/blue

4163



Navy/grey

6797



Grey/orange

9830



### 5138 Flannel Shirt

65513801 - S-3XL

Genuine woven cotton flannel. Two breast pockets with flaps and buttons. Plastic buttons with anti-scratch. Oeko-Tex.

100% cotton, 160 g/m<sup>2</sup>.



www.oeko-tex.com



Red/blue

4163



Navy/grey

6797



Grey/orange

9830



### 5157 Lined Flannel Shirt

65515701 - S-3XL

Quilt lined shirt with metal snap buttons. Genuine woven flannel ensures colourfastness. Two breast pockets with flaps and snap buttons, left with pen compartment. Oeko-Tex.

100 % cotton Quilt lined, 160 g/m<sup>2</sup>.



www.oeko-tex.com







Denim Blue

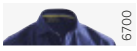


**5139 Denim Shirt**

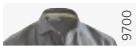
65513915 - XS-3XL

Denim shirt, washed with contrast stitches. Oeko-Tex.

100% Cotton, 170 g/m<sup>2</sup>.



Navy



Graphite



Black

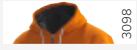


**5601 Shirt Cotton**

65560117 - XS-3XL

Shirt in 100% cotton. Long sleeves. Button tab inside sleeves. Concealed buttons. Zip chest pockets. D-ring on chest. Oeko-Tex.

100% cotton, 160 g/m<sup>2</sup>.



Orange/dark grey



Ocean/dark grey



Light grey/dark grey



**5154 Vintage Hoodie Lined**

65515438 - S-3XL

Unique comfortable and soft, insulating sweatshirt/pile bonded fabric. Pile lining. Hood with drawstring. Large front pockets. Ribbing in hem and cuffs. Jobman-logo on chest in embroidery patch.

65% cotton / 35% polyester, 430 g/m<sup>2</sup>.



Black/dark grey



### 5155 Vintage Hoodie Lined

65515538 - XS-3XL

Unique comfortable and soft, insulating sweatshirt/pile bonded fabric. Pile lining. Hood with drawstring. Large front pockets. Ribbing in hem and cuffs.

65% cotton / 35% polyester, 430 g/m<sup>2</sup>.



Black/yellow



Black/orange



### 5150 Hoodie Vision

65515053 - S-3XL

Hoodie in smooth polyester with fleece lining. Seams and zip in fluorescent colour and reflective strips on the shoulders. Front zip with storm flap. Chest pocket with zip and ID card pouch. Zip side pockets. Large open inside pockets. Adjustable hood with mesh lining. Flatlock seams. Adjustable drawstring hem.

100% polyester, 325 g/m<sup>2</sup>.



Black/yellow



Black/orange

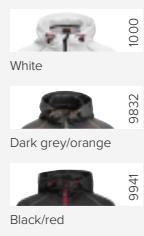


### 5620 Spun-Dye Vision T-shirt

65562053 - XS-4XL

T-shirt in smooth polyester, sleeves and side panels in soft interlock and front and back panels in birdseye knit for optimal moisture wicking. Spun dyeing is a colouring technique that consumes less water, energy and chemicals. Flatlock seams in fluorescent colour and reflective strips on the shoulders ensure high visibility. Oeko-Tex.

100% polyester, 135 g/m<sup>2</sup> interlock, 160 g/m<sup>2</sup> bird-eye.



**5152 Hoodie**  
**5177 Women's Hoodie**

65515253 - XS-3XL  
65517753 - S-XXL

Smooth polyester with fleece lining. Figure-hugging fit for ease of movement. Adjustable hood and drawstring hem. Functional fabric. Front zip with storm flap. Adjustable hood with mesh lining. Flatlock seams. Zip chest pocket with phone compartment. Zip side pockets. Large open inside pockets.  
100% polyester, 325 g/m<sup>2</sup>.



**5303 Hoodie Spun Dye**

65530356 - XS-3XL

Hoodie made from "spun-dyed" polyester. Spun dyeing is a dyeing technique that consumes less water, energy and chemicals. Reinforcement fabric on high-wear areas with dirt repellent finish. Hood with drawstring. Spacious front pockets with zips. Zipped chest pockets, D-ring inside for ID card holder.  
100% polyester, 280 g/m<sup>2</sup>.



**5304 Jacket Spun Dye**

65530456 - XS-3XL

Zippered jacket made from "spun-dyed" polyester. Spun dyeing is a dyeing technique that consumes less water, energy and chemicals. Reinforcement fabric on high-wear areas with dirt repellent finish. Spacious front pockets with zips. Zippered chest pockets, D-ring inside for ID card holder.  
100% polyester, 280 g/m<sup>2</sup>.



Dark grey/Black

9889



Black

9900



### 2191 Craftman Trousers Stretch

65219118 - C44-62, C146-156, D88-124

Comfortable 4-way stretch in durable Rip-stop fabric. Spacious holster pockets with extra compartments and reinforced insides, can be tucked into front pockets. Silicone rubber shirt-grip in waistband keeps the trousers in place. Crotch is reinforced with stretch Cordura®. Back pockets are partially detached to give easier access to contents. Extra belt loops in largest sizes. Hammer loop. Ruler pocket with knife button. Leg pocket with zip, phone pocket, ID-card pocket and extra pocket. Pre-bent knees for optimal fit. Knee pockets in durable stretch Cordura® with reflective piping and two positions for kneepads. Mesh at back of knee for ventilation. Reinforced at ankle-cuff with non-absorbing polyamide. Reflective piping and drawstring at ankle. Certified according to EN 14404:2004+A1:2010 Type 2 Level 1 together with Jobman's kneepads 9943, 9944 and 9945. Oeko-Tex.

91% polyamide/ 9% elastane, 210 g/m<sup>2</sup>.



Dark grey/black

9899



Black

9999

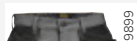


### 2195 Pirate Shorts Stretch

65219518 - C44-62, D84-124

Comfortable 4-way stretch in durable Rip-stop material. Crotch gusset with reinforced stretch Cordura®. Spacious holster pockets with extra compartments and reinforced insides. These can be tucked into the front pockets. Silicone rubber shirt-grip in waistband. Extra belt loops in largest sizes. Welled back pockets. Hammer loop, ruler pocket with knife pocket. Leg pocket with covered zip, ID card pouch and phone pocket. Pre-bent knees and durable stretch Cordura® kneepad pockets with 3M™ reflective piping and can be fitted in two positions. Mesh at back of knee for ventilation. Reflective details for optimal visibility at knee level. Reinforcements in Cordura® and polyamide.

91% polyamide/ 9% elastane, 210 g/m<sup>2</sup>.



Dark grey/black

9899



Black

9999



### 2196 Craftman Shorts Stretch

65219618 - C44-62

Comfortable 4-way stretch in durable Rip-stop material. Crotch gusset with reinforced stretch Cordura®. Spacious holster pockets with extra compartments and reinforced insides. These can be tucked into the front pockets. Silicone rubber shirt-grip in waistband. Extra belt loops in largest sizes. Welled back pockets. Hammer loop, ruler pocket with knife pocket. Leg pocket with covered zip, ID card pouch and phone pocket.

91% polyamide/ 9% elastane, 210 g/m<sup>2</sup>.





Dark grey/black



Black

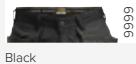


### 2194 Service Trousers Stretch

65219418 - C42-62, C146-156, D88-124

Comfortable 4-way stretch in durable Rip-stop material. Crotch gusset with reinforced stretch Cordura®. Silicone rubber shirt-grip in waistband. Extra belt loops in largest sizes. Spacious front pocket and welted back pockets. Spacious leg pockets with covered zip and mobile pocket. Pre-bent knees with kneepad pockets with dual-level inner opening. Mesh at back of knee for ventilation. Reinforcements in Cordura® and polyamide.

91% polyamide / 9% elastane, 210 g/m<sup>2</sup>.



Black



### 2164 Craftman Trousers Stretch 65216418 - C44-C62, C146-C156, D84-D124

Smooth craftsman trousers in durable cavalry twill with crotch gusset panels in stretch Cordura® for extra flexibility. Kneepad pockets with side panels in stretch Cordura®. Pre-bent knees in durable FA™ and adjustable kneepads in two positions. Spacious holster pockets with extra compartments and reinforced insides. These can be tucked into the front pockets. Extra belt loops in largest sizes. Hammer loop. Ruler pocket with knife pocket. Slanted leg pocket with zip, phone pocket, ID card pouch and extra compartment. Mesh at back of knee for ventilation. Reinforced ankle cuff with non-absorbing polyamide and drawstring. Certified according to EN 14404:2004+A1:2010 Type 2 Level 1 together with Jobman's kneepads 9943, 9944 and 9945. Oeko-Tex.

60% cotton, 40% polyester, 280 g/m<sup>2</sup>. Stretch: 92% polyamide Cordura®, 8% elastane, 250 g/m<sup>2</sup>. Reinforcement: 100% polyamide, 220 g/m<sup>2</sup>.



Black



### 2167 Pirate Shorts Stretch 65216718 - C44-62, D84-124

Smooth craftsman trousers in durable cavalry twill with crotch gusset panels in stretch Cordura® for extra flexibility. Kneepad pockets with side panels in stretch Cordura®. Pre-bent knees in durable FA™ and adjustable kneepads in two positions. Spacious holster pockets with extra compartments and reinforced insides. These can be tucked into the front pockets. Extra belt loops in largest sizes. Hammer loop. Ruler pocket with knife pocket. Slanted leg pocket with zip, phone pocket, ID card pouch and extra compartment. Drawstring at the end of the leg. Certified according to EN 14404:2004+A1:2010 Type 2 Level 1 together with Jobman's kneepads 9943, 9944 and 9945. Oeko-Tex.

60% cotton, 40% polyester, 280 g/m<sup>2</sup>. Stretch: 92% polyamide Cordura®, 8% elastane, 250 g/m<sup>2</sup>. Reinforcement: 100% polyamide, 220 g/m<sup>2</sup>.



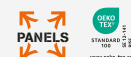
Navy/black



Dark grey/black



Black



### 2168 Craftman Shorts Stretch 65216818 - C44-C62

Smooth craftsman shorts in durable cavalry twill with crotch gusset panels in stretch Cordura® for extra flexibility. Spacious holster pockets with extra compartments and reinforced insides. These can be tucked into the front pockets. Extra belt loops in largest sizes. Hammer loop. Ruler pocket with knife pocket. Slanted leg pocket with zip, phone pocket, ID card pouch and extra compartment.

60% cotton, 40% polyester, 280 g/m<sup>2</sup>. Stretch: 92% polyamide Cordura®, 8% elastane, 250 g/m<sup>2</sup>. Reinforcement: 100% polyamide, 220 g/m<sup>2</sup>.



Navy/black

6799



Dark grey/black

9999



### 2200 Craftsman Trousers Cotton 65220013 - C44-62, C146-156, D88-124

### 2201 Women's Craftsman Trousers 65220113 - 34-48

Polyamide-reinforced holster pockets, back pockets, ruler pocket and knee pad pockets. Hip pocket for phone. Spacious holster pockets with extra compartments and inside reinforcement. Inset front pockets for tucking away holster pockets. Hammer loop. Reinforced back pockets. Reinforced ruler pocket with bellowed bottom edge and knife button. Leg pocket with phone compartment. Gusset in crotch. Pre-bent knees with kneepad pockets in polyamide. Kneepad pockets with two positions for kneepads. Certified according to EN 14404:2004+A1:2010 Type 2 Level 1 together with Jobman's kneepads 9943, 9944 and 9945. Oeko-Tex.

100% cotton, 370 g/m<sup>2</sup>.



Navy/Black

6799



Dark Grey/Black

9899



Black

9999



### 2732 Craftsman Trousers Cotton 65273211 - C44-62, C146-156, D92-124

Reinforced details including holster pockets, back pockets and ruler pocket. Spacious holster pockets that can be tucked into front pockets. Spacious front pockets. back pockets with reinforced inside. hammer loop. Extra belt loops in largest sizes. Ruler pocket with knife button. Leg pocket with zip, phone pocket, ID-card pocket and extra pocket. Pre-bent knees for optimal fit. Knee pockets in durable Cordura® with reflective piping and two positions for kneepads. Reinforced at ankle-cuff with non-absorbing polyamide. Reflective piping and drawstring at ankle. Certified according to EN 14404:2004+A1:2010 Type 2 Level 1 together with Jobman's kneepads 9943, 9944 and 9945. Oeko-Tex.

100% cotton, 300 g/m<sup>2</sup>.



Navy/black

6799



Dark grey/black

9899



Black

9900



### 2181 Craftsman Trousers Core 65218119 - C44-62, C146-156, D88-124

Ring-spun cotton/polyester is a fabric with strength of polyester and softness of cotton, which gives superb durability and comfort. Inset front pockets. Reinforced holster pockets with extra compartments and tool band. Phone pocket and snaplink in front. Extra wide belt loops. Reinforced back pockets. Ruler pocket with knife button. Left leg pocket with zipper, ID card pocket, phone compartment and tool compartment. Pre-bent legs with durable knee pockets in DuPont™ Kevlar®. Kneepads can be fitted in two positions. Reinforced leg ends which repels moisture. Reflective piping and drawstring at ankle hem. Certified according EN 14404:2004+A1:2010 Type 2 Level 1 together with kneepad 9943, 9944 and 9945.

55% cotton / 45% polyester CORE, 305 g/m<sup>2</sup>.



9821  
Dark grey/yellow



9921  
Black/yellow



**2134 Craftsman Trousers Core Stretch Hi-Vis**

65213419 - C44-62,  
C146-156, D84-124

Class 1 craftsman trousers with crotch gusset panels in stretch Cordura® for extra flexibility. Kneepad pockets with side panels in stretch Cordura®. Core is ring-spun cotton/polyester, a fabric with strength of polyester and softness of cotton, which gives superb durability and comfort. Pre-bent at knee with kneepockets made from durable FA™ where kneepads can be fitted in two positions. Spacious holster pockets with extra compartments and reinforced insides. These can be tucked into the front pockets. Extra belt loops in largest sizes. Hammer loop. Ruler pocket with knife pocket. Slanted leg pocket with zip, phone pocket, ID card pouch and extra compartment. Mesh at back of knee for ventilation. Reinforced ankle cuff with non-absorbing polyamide and drawstring. Certified according to EN 14404:2004+A1:2010 Type 2 Level 1 together with Jobman's kneepads 9943, 9944 and 9945. Certified Class 1 according to EN ISO 20471. Oeko-Tex.

55% cotton/ 45% polyester CORE, 305 g/m<sup>2</sup>.



www.oeko-tex.com



Navy/black

6799



Dark Grey/Black

9899



Black

9999



### 2733 Craftsman Shorts Cotton

65273311 - C44-62

Spacious holster pockets that can be tucked into front pockets. Spacious front pockets. back pockets with reinforced inside. hammer loop. Extra belt loops in largest sizes. Ruler pocket with knife button. Leg pocket with zip, phone pocket, ID-card pocket and extra pocket.

100% cotton, 300 g/m<sup>2</sup>.



Black

9900



www.oeko-tex.com

### 4327 Service Overalls

65432723 - C46-62

Basic functions for service personnel and mechanics. Suitable for industrial laundering at 85°C. Concealed two-way zip. Chest pockets with flap. Back pockets with flap. Inset front pockets. Side slits. Adjustable elasticated waist. Adjustable sleeve with snap fastener. Open leg pocket with extra compartment and ruler pocket. Leg pocket with flap and phone compartment. Internal kneepad pockets. Leg zips to knee.

65% polyester/ 35% cotton, 260 g/m<sup>2</sup>.



Navy

6600



www.oeko-tex.com

### 4145 Service Overalls cotton

65414511 - C46-62

Suitable for industrial laundering at 85°C. Basic features for service personnel and mechanics. External knee pad pockets. Concealed buttons up to top of collar. Right chest pocket with flap. Left chest pocket with pen compartment. Inset front pockets. Back pockets. Side slits. Adjustable waistband and sleeves. Ruler pocket. External knee pad pockets.

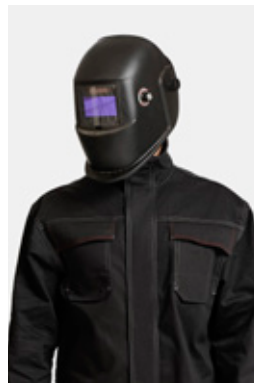
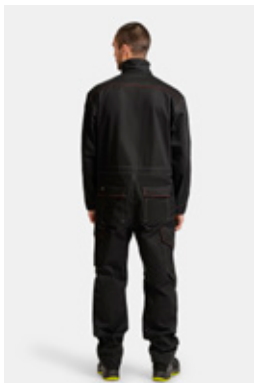
100% cotton, 300 g/m<sup>2</sup>.





## Flame retardant

100% flame-retardant treated cotton. CE-certified, tested, and approved according to EN ISO 11611 and EN ISO 11612. The certification signifies that the material and garment design provide protection against edge ignition and flame propagation; it does not melt. It also withstands heat according to the test standards, which helps prevent









### 4037 Welders Overalls

65403714 - XS - 3XL

Jobman's welders collection in 350g/m<sup>2</sup> cotton are treated with the flame retardant Proban and are certified according to standards EN11612 and EN11611. Pocket solutions and other functions are specially adapted for welding. Kneepockets outside gives comfort and durability. Two-way zip with flap. Breast pockets with flap. Innerpocket with phone compartment. Penn compartment. Front pockets. Back pockets with bellow and flap. Ruler pocket. Leg pocket with flap. Adjustable waist and cuff. Certified according to EN ISO 11612, A1+A2 B1 C1, E2, F1, EN ISO 11611, Class 1 A1+A2. Oeko-tex certified.

100% Cotton, ringspun twill. Proban treated 350g/m<sup>2</sup>.



Black



### 1092 Welding Jacket

65109214 - XS - 3XL

Jobman's welders collection in 350 g/m<sup>2</sup> cotton is treated with the flame retardant Proban and certified according to standards EN11612 and EN11611. Pocket solutions and other functions are specially adapted for welding. Zip up to top of collar with storm flap. Chest pockets with bellows and flap. Front pockets. Large inside pocket and inside pocket with phone compartment. Adjustable waist and cuff. Fits well with flame trousers 2092. Certified according to EN ISO 11612, A1+A2 B1 C1, E2, F1, EN ISO 11611, Class 1 A1+A2. Oeko-tex certified.

Fabric 1: 100% Cotton, ringspun twill. Proban treated, 350g/m<sup>2</sup>.



Black





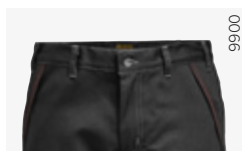


### 2092 Welding Trousers

65209214 - C44 - C62, D88 - D124

Jobman's welders collection in 350g/m<sup>2</sup> cotton are treated with the flame retardant Proban and are certified according to standards EN11612 and EN11611. Pocket solutions and other functions are specially adapted for welding. Kneepockets outside gives comfort and durability. Front pockets. Back pockets with flap. Leg pocket with phone compartment. Ruler pocket. Fits well with welding jacket 1092. Certified according to EN ISO 11612, A1+A2 B1 C1, E2, F1, EN ISO 11611, Class 1 A1+A2. Oeko-tex certified.

100% Cotton, ring spun twill. Proban treated, 350g/m<sup>2</sup>.



Black





## Jobman Winter

Jobman Workwear is proud to present its new Winter Collection – a series of robust winter jackets, warming base layers, and durable workwear that keeps you warm during the coldest workdays. This collection has been developed to meet the demands for functionality and comfort in harsh winter conditions, with high-quality materials and smart details. With Jobman Winter, you get reliable clothing that not only protects against cold and wind but also offers freedom of movement and durability for demanding work environments.





Black



### 1035 Winter Jacket

65103530 - XS-3XL

Warm padded, wind and waterproof jacket with good breathability in 2-layer polyamide taslan, with taped seams. Reinforcement with Oxford polyester. Seamless soft reflective strips featuring Jobman design on the shoulders and lower back for optimal visibility. Front zip with double storm flap, protects against cold air and prevents rain penetration. Soft, comfortable pile on the inside of collar and inside over shoulders. Ventilation at back yoke. Removable hood with drawstring and snap fasteners. Adjustable drawstring at hem, slightly longer at back. Soft ribbed cuffs with thumb grip on the inside and adjustable on outside with velcro. Two generous chest pockets with zips, one with Napoleon pocket under the storm flap. D-ring for ID card holder in right chest pocket. Two spacious front pockets with hidden zip. Two mesh inner pockets for e.g. gloves. Water column: 11000 mm. Breathability: 6000 g/m<sup>2</sup> 24h. Certified according to EN 342 for protection against cold. Certified according to EN 343 for rainwear. Oeko-Tex.

100% polyamide, taslan, 200 g/m<sup>2</sup>.



Black



### 1335 Winter Parka

65133530 - XS-3XL

Warm padded, wind and waterproof parkas with good breathability in 2-layer polyamide taslan, with taped seams. Reinforcement with Oxford polyester. Seamless soft reflective strips featuring Jobman design on the shoulders and lower back for optimal visibility. Front zip with double storm flap, protects against cold air and prevents rain penetration. Soft, comfortable pile on the inside of collar and inside over shoulders. Ventilation at back yoke. In size Large, the garment measures 90 cm from neck to hem at center back. Removable hood with drawstring and snap fasteners. Adjustable drawstring at waist. Soft ribbed cuffs with thumb grip on the inside and adjustable on outside with velcro. Two generous chest pockets with zips, one with Napoleon pocket under the storm flap. D-ring for ID card holder in right chest pocket. Two spacious front pockets with hidden zip. Two mesh inner pockets for e.g. gloves. Water column: 11000 mm. Breathability: 6000 g/m<sup>2</sup> 24h. Certified according to EN 342 for protection against cold. Certified according to EN 343 for rainwear. Oeko-Tex.

100% polyamide, taslan, 200 g/m<sup>2</sup>.



Black

Detachable braces



### 2935 Winter Trousers

65293530 - XS-3XL

Warm padded, wind and waterproof trousers in 2-layer Oxford Polyester with taped seams and good breathability. Seamless soft reflective strips featuring Jobman design at hem for optimal visibility. Detachable braces, with zipper at the back and velcro at the front. Also adjustable with elastic at waist. Extra warm and comfortable micro fleece lining at seat. Spacious front pockets. Left leg pocket with ID-card holder and mobile compartment. Ruler pocket on the right side. Pre-bent legs with knee protection pockets. Hammer loop on right side back from waistband. Drawstring at ankle prevent cold draughts. Strap with a push button for the possibility of attaching trousers to shoe. Zipper up to the knee simplifies dressing. Water column: 10000 mm. Breathability: 5000 g/m<sup>2</sup> 24h. Certified according to EN 342 for protection against cold. Certified according to EN 343 for rainwear.

100% Oxford polyester, 218 g/m<sup>2</sup>.









White 1000



Navy 6700



Dark grey 9800



Black 9900



### 1040 Winter Jacket Softshell 1041 Women's Winter Jacket Softshell

65104078 - XS-3XL

65104178 - XS-3XL

Warm padded, light and comfortable jacket in softshell fabric. Removable hood with drawstring and snap fasteners. Front pockets with zippers behind pocket pipes. Spacious inner pocket in mesh for gloves and beanie. Access zip in lower back to allow for embroidery. Quilted lining in body (140 g/m<sup>2</sup>) and sleeves (120 g/m<sup>2</sup>), micro fleece lined over shoulders and part of the back. Functional net lining in middle back for good moisture transport. The jacket is adjustable with drawstring at hem. Discreet reflective piping in the back provides better visibility. Front zip with storm flap and snap fasteners. Cuffs, half of ribbed material and half of shell fabric. Water column: 3000 mm. Breathability: 1000 g/m<sup>2</sup> 24h. Impregnated with dirt and water repellent.

Shell fabric in 100% polyester, knitted softshell with inside fleece, 305 g/m<sup>2</sup>.



White 1000



Navy 6700



Dark grey 9800



Black 9900



### 1357 Pilot Jacket

65135739 - XS-3XL

Winter jacket in durable polyester. Quilted lining for freedom of movement and comfort. Elasticated waist and cuffs. Pilot jacket made from durable water-repellent polyester with smooth quilted lining. Warming pile lining in collar. Chest pockets and sleeve pocket with zip and front pockets. Inside pocket with compartments for phone. D-ring for ID card pouch. In black up to size 5XL.

100% polyester, 200 g/m<sup>2</sup>.



Black 9900

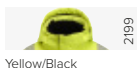


### 4334 Winter Overall

65433436 - XS-3XL

Wind and waterproof quilted overall with taped seams. Heat-pressed reflective strips, Jobman design over the shoulders and around bottom legs. Two generous chest pockets with zips, one Napoleon pocket under the storm flap. Weltd front pockets. Adjustable with Velcro at sleeve ends and bottom legs. Hood with drawstring, detachable with snap fasteners. Zippers at side seams from hip down to bottom leg. Water column: 23000 mm. Breathability: 3300 g/m<sup>2</sup> 24h. Certified according to EN 342 for protection against cold. Certified according to EN 343 for rainwear.

100% Polyester, 200 g/m<sup>2</sup>. Quilted lining, 200 g/m<sup>2</sup>.



Yellow/Black



### 1235 Winter Jacket Hi-Vis

65123542 - XS-3XL

Warm padded, wind and waterproof jacket with good breathability in 2-layer construction, with taped seams. Reinforcement with Oxford polyester. Seamless soft reflective strips featuring Jobman design. Front zip with double storm flap, protects against cold air and prevents rain penetration. Soft, comfortable pile on the inside of collar and inside over shoulders. Ventilation at back yoke. Removable hood with drawstring and snap fasteners. Adjustable drawstring at hem, slightly longer at back. Soft ribbed cuffs with thumb grip on the inside and adjustable on outside with velcro. Two generous chest pockets with zips, one with Napoleon pocket under the storm flap. D-ring for ID card holder in right chest pocket. Two spacious front pockets with hidden zip. Two mesh inner pockets for e.g. gloves. Water column: 11000 mm. Breathability: 6000 g/m<sup>2</sup> 24h. Shell fabric has a fluorine-free finish. BIONIC-FINISH® DWR-treatment. Certified in Hi-vis, class 3 according EN ISO 20471. Certified according to EN 342 for protection against cold. Certified according to EN 343 for rainwear. Certified according Oeko-tex

100% Polyester, 164g/m<sup>2</sup>. Reinforcement: 100% Polyester, 218g/m<sup>2</sup>.



Yellow/black 2199

Detachable braces



**2235 Winter Trousers Hi-Vis**

65223542 - XS-3XL

Warm padded, wind and waterproof trousers with good breathability in 2-layer construction with taped seams. Seamless soft reflective strips featuring Jobman design. Detachable braces, with zipper at the back and velcro at the front. Also adjustable with elastic at waist. Extra warm and comfortable micro fleece lining at seat. Spacious front pockets. Left leg pocket with ID-card holder and mobile compartment. Ruler pocket on the right side. Pre-bent legs with knee protection pockets. Hammer loop on right side back from waistband. Drawstring at ankle prevent cold draughts. Strap with a push button for the possibility of attaching trousers to shoe. Zipper up to the knee simplifies dressing. Water column: 11000 mm. Breathability: 6000 g/m<sup>2</sup> 24h. Shell fabric has a fluorine-free finish. BIONIC-FINISH® DWR-treatment. Certified in Hi-vis, class 2 according EN ISO 20471 – Sizes XS – 3XL. Certified according to EN 342 for protection against cold. Certified according to EN 343 for rainwear.

100% Polyester, 164g/m<sup>2</sup>. Reinforcement: 100% Polyester, 218g/m<sup>2</sup>.



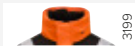
Yellow/navy

2167



Yellow/black

2199



Orange/black

3199



### 1347 Winter Jacket Star Hi-Vis

65134707 - XS-4XL

Warm jacket made from durable and water repellent 100% STAR polyester. Warm pile lining in body and smooth quilted lining in sleeves. The inside of the collar is lined with soft, fleece fur lining. Foldable hood in collar. Chest pocket with ID card pouch. Inside pockets with zip and phone pocket. Large front pockets. Adjustable hem and cuffs with comfort cuff. Reflective strips on shoulders, visible from above. Polyamide reinforcements. Certified according to EN 342 for protection against cold. Certified Class 3 according to EN ISO 20471.

100% STAR polyester, 250 g/m<sup>2</sup>.



Yellow

2100



Orange

3100



### 1359 Pilot Jacket Hi-Vis

65135939 - S-4XL

Pilot jacket in durable water repellent polyester with smooth, quilted lining to make the jacket easy to get on and off. Warming pile lining in collar. Breast pockets and sleeve pocket with zipper and front pockets. Inside pocket with compartments for mobile. D-ring for ID card holder. Certified Class 3 according to EN ISO 20471.

100% polyester, 200 g/m<sup>2</sup>.



Yellow/black

2199



Orange/black

3199






### 2240 Craftsman Trousers Stretch Hi-Vis

65224062 - C44-C62, C146-C156, D84-D124

Smooth craftsman trousers in durable hi-vis twill with crotch gusset panels in stretch Cordura® for extra flexibility. Kneepad pockets with side panels in stretch Cordura®. Pre-bent knees in durable FA™ and adjustable kneepads in two positions. Spacious holster pockets with extra compartments and reinforced insides. These can be tucked into the front pockets. Extra belt loops in largest sizes. Hammer loop. Ruler pocket with knife pocket. Slanted leg pocket with zip, phone pocket, ID card pouch and extra compartment. Mesh at back of knee for ventilation. Reinforced ankle cuff back with non-absorbing polyamide and drawstring. Certified according to EN 14404:2004+A1:2010 Type 2 Level 1 together with Jobman's kneepads 9943, 9944 and 9945. Certified Class 2 according to EN ISO 20471 – from C46, C146 and D92. Certified Class 1 according to EN ISO 20471 – in C44, D84-D88.

75% polyester/ 25% cotton, 260 g/m<sup>2</sup>.



-  2167
-  2199
-  3199



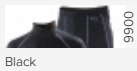
**2236 Winter Trousers Star Hi-Vis** 65223607 - C44-62, C146-156, D88-124

Quilt-lined, lightweight trousers made from durable, water repellent 100% STAR polyester. Adjustable waist. Extended back stops cold draughts. Spacious front pockets. Reinforced back pockets. Leg pocket with ID card pouch and phone compartment. Ruler pocket with knife pocket. Pre-bent knees with kneepad pockets where kneepads can be positioned at two heights. Adjustable ankle-cuffs prevent cold draughts. Certified according to EN 14404:2004+A1:2010 Type 2 Level 1 together with kneepad 9943, 9944 and 9945. Certified according to EN 342 for protection against cold. Certified Class 2 according to EN ISO 20471.

100% STAR polyester, 250 g/m<sup>2</sup>.







Black

9900



**6579 Duo-pack Underwear**

65657951 - XS-3XL

Top with extended back and polo neck with diagonal zip that doesn't chafe the neck. Long johns with Y-front. Elastic side panels. When applying the layering principle, Dry-Tech™ fabric is ideal as layer 1. It is built up from micro-fibres that wick sweat away from the body and spread it over a wider surface area. The microscopic sweat particles then evaporate extremely quickly, keeping you feeling fresh and dry all day long.

70% polyester/ 30% viscose, 130 g/m<sup>2</sup>.



Black

9900



**2570 Underwear Long Johns**

65257079 - XS-3XL

Long Johns in rib knitted recycled polyester. Stretch comfort waistband with Jobman logo. Flatlock seams in contrast colour. Available in top, round neck, style 5570.

100% recycled polyester, 150 g/m<sup>2</sup>.



Black

9900



**5570 Underwear top Round neck**

65557079 - XS-3XL

Underwear top in rib knitted recycled polyester with extended back. Cuffs with thumb grip. Flatlock seams in contrast colour. Available in Long Johns, style 2570.

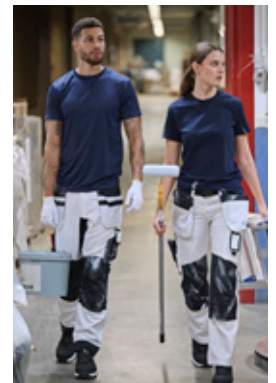
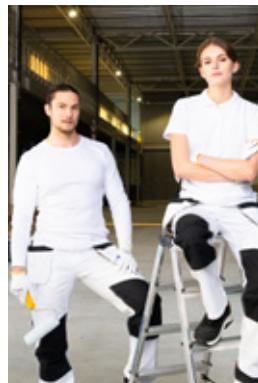
100% recycled polyester, 150 g/m<sup>2</sup>.





## Painter & Floor Layer

Jobman Workwear's collection for painters and floor layers has been developed to meet the specific needs of these professions. The collection offers durable and comfortable workwear with practical details that make daily tasks easier. Our trousers feature strategic pockets for tools and brushes, as well as reinforced areas for extra durability. Additionally, all trousers are compatible with Jobman knee protectors and certified according to EN 14404: 2004+A1:2010.





White

1010



### 5230 Longsleeve T-shirt

65523010 - XS-3XL

Unisex long-sleeved T-shirt in soft, comfortable interlock tricot. Reinforced shoulder seams with double stitching and soft neckline.

100% combed cotton, 220 g/m<sup>2</sup>.



White/Svart

1060



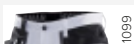
### 2129 Painters' Trousers HP 2179 Women's Painter Trousers

65212911 - C44-62, C146-156, D88-124

65217911 - 34-50

Painters' trousers with excellent fit and design developed for professional painters. Jobman's hard-wearing, close-woven cotton twill, maximises quick dispersion of solvent to minimise pigment absorption. The painters' trousers have spacious holster pockets, and the inside of the inner pocket is lined with water-repellent FA™ polyamide. Spacious front and back pockets, leg pocket with extra compartment and zip, mobile pocket and ID card pocket. Knife and ruler pocket with useful compartment for all painting tools. The trousers have a cloth holder loop. Washable at 85°C. Kneepad pockets in hard-wearing FA™ polyamide with two kneepad positions. Certified according to EN 14404: 2004+A1:2010 Type 2 Level 1 together with Jobman's kneepads 9943, 9944 and 9945.

100% cotton, 300 g/m<sup>2</sup>.



White/black

1069



### 2171 Painters' Trousers Core

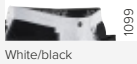
65217119 - C44-62, C146-156, D88-124

Ring-spun cotton/polyester is a fabric with strength of polyester and softness of cotton, which gives superb durability and comfort. Spacious holster pockets with extra compartments and reinforced waterproof lining to keep you dry with a wet sponge in your pocket. Holster pockets can be tucked into front pockets. Snap-link in front. Back pockets with reinforced insides. Extra belt loops in large trousers. Buttons in rubber to minimise scratching. Hammer loop. Double putty knife pocket with knife button. Leg pocket with flap over zip, ID-card pocket and phone pocket. Pre-bent knees and durable Cordura® pockets for kneepads can be fitted in two positions. Reinforced at ankle with non-absorbing polyamide with reflective piping and drawstring. Certified to EN 14404:2004+A1:2010 Type 2 Level 1 together with Jobman's kneepads 9943, 9944 and 9945.

55% cotton / 45% polyester CORE, 305 g/m<sup>2</sup>.







White/black



### 2133 Painters' Pirate shorts

65213311 - C44-62, D92-120

Pirate shorts with excellent fit and design developed for professional painters. Jobman's hard-wearing, close-woven cotton twill, maximises quick dispersion of solvent to minimise pigment absorption. The pirate shorts have spacious holster pockets, and the inside of the inner pocket is lined with water-repellent FA™ polyamide. Spacious front and back pockets, leg pocket with extra compartment and zip, mobile pocket and ID card pocket. Knife and ruler pocket with useful compartment for all painting tools. The pirate shorts have a cloth holder loop. Washable at 85°C. Kneepad pockets in hard-wearing FA™ polyamide with two kneepad positions. Certified according to EN 14404: 2004+A1:2010 Type 2 Level 1 together with Jobman's kneepads 9943, 9944 and 9945.

100% cotton, 300 g/m<sup>2</sup>.



Dark grey/black



### 2358 Floorlayers Trousers Stretch

65235820 - C42-62, D84-120

Easy-care polyester/cotton that holds colour and shape. Stretch panels at the back for extra flexibility. Spacious front pockets. Holster pockets with extra compartments and extra zip. Welted back pockets. Leg pocket with extra compartment and flap with velcro closure. Ruler pocket with knife pocket. Thigh pocket for floorlayers' knives. Reinforcement on kneepad pocket. Kneepads can be fitted in two positions for optimal fit. Trousers can be extended with 5 cm turn-up at ankle hem. Certified according to EN 14404:2004+A1:2010 Type 2 Level 1 together with Jobman's kneepads 9943, 9944 and 9945.

65% polyester / 35% cotton, 245 g/m<sup>2</sup>. Stretch: 90% polyamide / 10% elastane, 240 g/m<sup>2</sup>. Reinforcement: 100% polyamide, 220 g/m<sup>2</sup>.



Dark grey/black



### 2362 Floorlayers Pirate Shorts Stretch

65236220 - C42-62, D84-120

Easy-care polyester/cotton that holds colour and shape. Stretch panels at the back for extra flexibility. Spacious front pockets. Holster pockets with extra compartments and extra zip. Welted back pockets. Leg pocket with extra compartment and flap with velcro closure. Ruler pocket with knife pocket. Thigh pocket for floorlayers' knives. Reinforcement on kneepad pocket. Kneepads can be fitted in two positions for optimal fit. Certified according to EN 14404:2004+A1:2010 Type 2 Level 1 together with Jobman's kneepads 9943, 9944 and 9945.

65% polyester / 35% cotton, 245 g/m<sup>2</sup>. Stretch: 90% polyamide / 10% elastane, 240 g/m<sup>2</sup>. Reinforcement: 100% polyamide, 220 g/m<sup>2</sup>.







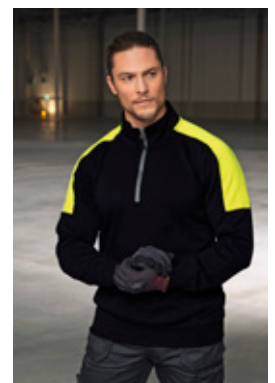
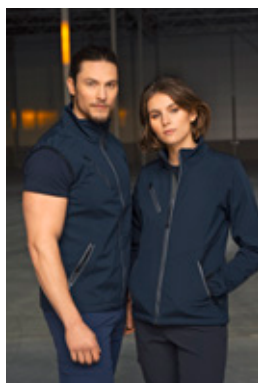
All Jobman Practical garments are identified with a P after the item number in the catalogue.







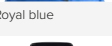


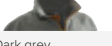
# Jobman Practical

Our Practical Collection has been developed to meet the requests and demands of professional workers who want simpler garment styles without compromising on comfort or functionality.

The Practical Collection is specifically designed to meet the need for comfortable, durable, high-quality workwear at a lower price point compared to our more specialized garments. As a customer, you can expect the same high quality that Jobman has always offered, while the simpler design of this collection allows for a more attractive price. The wide range is available in a large number of sizes and colors, and, of course, high-visibility clothing is also included in the range. The leg length can also be extended by 5 cm. As always with Jobman, you'll find functional clothing from head to toe.





-  1700
- Brown
-  3000
- Orange
-  4100
- Red
-  6500
- Royal blue
-  6700
- Navy
-  7500
- Forest green
-  9800
- Dark grey
-  9900
- Black






**5501 Fleece Jacket**

65550175 - XS-4XL

Warm fleece jacket. Spacious front pockets with zip. Inside pockets. Elasticated cuffs with thumb grip. Elasticated hem. YKK front zip.

100% polyester, 280 g/m<sup>2</sup>.

-  6700
- Navy
-  9700
- Graphite
-  9900
- Black



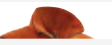

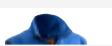






**5901 Microfleece Jacket**

65590154 - XS-4XL

Lightweight, smooth fleece jacket. Spacious front pockets with zip. Inside pockets. Elasticated cuffs. Elasticated hem.

100% polyester, 190 g/m<sup>2</sup>.

-  1400
- Khaki
-  1700
- Brown
-  3000
- Orange
-  4100
- Red
-  6500
- Royal blue
-  6700
- Navy
-  7500
- Forest green
-  9800
- Dark grey
-  9900
- Black



**7501 Fleece Vest**

65750175 - XS-4XL

Spacious front pockets with zip. Inside pockets. Elasticated hem. Elasticated armholes. YKK front zip.

100% polyester, 280 g/m<sup>2</sup>.



White/black 1099



Navy/black 6799



Dark grey/black 9899



Black 9999



### 5400 Sweatshirt Hoodie

65540020 - XXS-4XL

Hoodie in double face fabric. Zip at front. Weltd front pockets. Rib at bottom hem and sleeve ends. Sidepanels in contrast color.

80% cotton/ 20% polyester, 320 g/m<sup>2</sup>.



-  1099  
White/black
-  1499  
Khaki/black
-  1799  
Brown/black
-  4199  
Red/black
-  6399  
Sky blue/black
-  6799  
Navy/black
-  7599  
Forest green/black
-  9899  
Dark grey/black
-  9921  
Black/yellow
-  9999  
Black


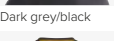


**5401 Sweatshirt 1/2-zip**

65540120 - XS-4XL

Sweatshirt in double face fabric. High collar and half zip at front. Ribbing at hem and cuffs. Contrast panel on side, (contrasts on the black/yellow on the shoulders).

+1099, 6799, 9899, 9999 XXS.  
80% cotton/ 20% polyester, 320 g/m<sup>2</sup>.

-  1099  
White/black
-  1499  
Khaki/black
-  1799  
Brown/black
-  4199  
Red/black
-  6399  
Sky blue/black
-  6799  
Navy/black
-  7599  
Forest green/black
-  9899  
Dark grey/black
-  9921  
Black/yellow
-  9999  
Black





**5402 Sweatshirt**

65540220 - XS-4XL

Round-necked sweatshirt in double face fabric. Ribbing at hem and cuffs. Contrast panel at sides.

+1099, 6799, 9899, 9999 XXS.  
80% cotton / 20% polyester, 320 g/m<sup>2</sup>.



-  9921  
Black/yellow
-  9999  
Black/Black



**5403 Sweatshirt full-zip**

65540320 - XXS - 4XL

Sweatshirt with full-zip in double face-material. Ribbing at hem and cuffs.

80% cotton/ 20% polyester, 320 g/m<sup>2</sup>





White

1000



Khaki

1400



Brown

1700



Orange

3000



Red

4100



Royal blue

6500



Navy

6700



Forest green

7500



Grey melange

9300



Black

9900



Black/yellow

9921



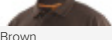



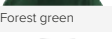
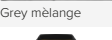
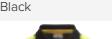
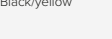
**5264 Men's T-shirt**  
**5265 Women's T-shirt**

65526410 - XS-3XL

65526510 - XS-3XL

Regular fit T-shirt in single jersey. Reinforced shoulder seams and double stitching around the neckline.

100% cotton (grey melange 85% cotton / 15% viscose), 180 g/m<sup>2</sup>.

-  1000
-  1400
-  1700
-  4100
-  6300
-  6700
-  7500
-  9300
-  9900
-  9921




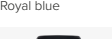

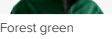



**5564 Polo shirt**

6556430 - XS-3XL

Classic polo shirt with closure with three tone-on-tone buttons. Vent in hem. Ribbed collar and cuffs. Decorative orange tape inside collar and vent.

65% polyester / 35% cotton (grey melange 85% cotton / 15% viscose), 200 g/m<sup>2</sup>.

-  1000
-  4100
-  6500
-  6700
-  7500
-  9800
-  9900












**1201 Softshell Jacket**  
**1203 Women's Softshell Jacket**

65120171 - XS-4XL

65120371 - XS-XXL

Windproof and water repellent tripled-layered softshell with fleece inside. Chest pocket with ID card pocket. Spacious front pockets with zip. Inside pockets. Elasticated cuffs with thumb grip. Adjustable drawstring hem. YKK front zip.

96% polyester, 4% elastane + inside: 100% polyester fleece, 280 g/m<sup>2</sup>.

-  1400
-  1700
-  3000
-  4100
-  6500
-  6700
-  7500
-  9898
-  9900

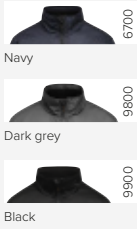


**7502 Softshell Vest**

65750271 - XS-4XL

Windproof and water repellent tripled-layered softshell. Chest pocket with ID card pocket. Spacious front pockets with zip. Inside pockets. Elasticated armholes. Adjustable drawstring hem. YKK front zip.

96% polyester, 4% elastane + inside: 100% polyester fleece, 280 g/m<sup>2</sup>.



### 1317 Service Jacket Lined

65131720 - XS-3XL

Quilt lined service jacket in easy-care polyester/cotton. Two chest pockets with velcro closure, D-ring on left chest pocket for ID card. Brushed soft polyester inside collar. Front pockets with zip. Two inside pockets, one large one for documents and one for a mobile phone. Adjustable cuffs and hem. Reflective strips at the front on the flap. Extended back with reflective piping.

65% polyester / 35% cotton, 245 g/m<sup>2</sup>.

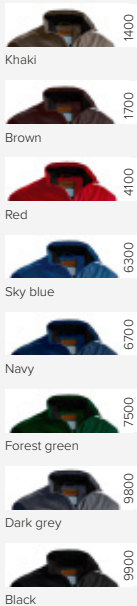


### 7517 Service Vest Lined

65751720 - XS-3XL

Quilt lined service vest in easy-care polyester/cotton. Two chest pockets with velcro closure, D-ring on left chest pocket for ID card. Brushed soft polyester inside collar. Front pockets with zip. Two inside pockets, one large one for documents and one for a mobile phone. Adjustable hem. Reflective strips at the front on the flap. Extended back with reflective piping.

65% polyester / 35% cotton, 245 g/m<sup>2</sup>.



### 7507 Service Vest

65750720 - XS-3XL

Service vest in easy-care polyester/cotton. Two chest pockets with velcro closure, D-ring on left chest pocket for ID card. Brushed soft polyester inside collar. Front pockets with zip. Three inside pockets, two open and one for a mobile phone. Reflective strips at the front on the flap. Extended back with reflective piping.

65% polyester / 35% cotton, 245 g/m<sup>2</sup>.





-  1499
-  6799
-  9899
-  9999



**2322 Craftsman Trousers**

65232220 - C42-64, D84-124

Easy-care polyester/cotton that holds colour and shape. Holster pockets with extra compartment and extra zip pocket. Back pockets with flap and velcro closure. Leg pocket with extra compartment and flap with velcro closure. Ruler pocket with knife pocket. Reinforced holster pockets and kneepad pockets. C42-64 can be extended with 5 cm turn-up at ankle hem.

65% polyester / 35% cotton, 245 g/m<sup>2</sup>.

-  1499
-  6799
-  9899
-  9999







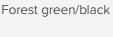
**2722 Craftsman Shorts**

65272220 - C42-64

Easy-care polyester/cotton that holds colour and shape. Holster pockets with extra compartment and extra zip pocket. Back pockets with flap and velcro closure. Leg pocket with extra compartment and flap with velcro closure. Ruler pocket with knife pocket. Reinforcement in holster pockets.

65% polyester / 35% cotton, 245 g/m<sup>2</sup>.



-  1099
-  1499
-  6799
-  7599
-  9899



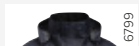
**2321 Service Trousers**

65232120 - C42-64, D84-124

Easy-care polyester/cotton that holds colour and shape. Back pockets with flap and velcro closure. Leg pocket with extra compartment and flap with velcro closure. Ruler pocket with knife pocket. Reinforcement on kneepad pockets. C42-64 can be extended with 5 cm turn-up at ankle hem.

65% polyester / 35% cotton, 245 g/m<sup>2</sup>.





6799

Navy/black



9899

Dark grey/black



9999

Black

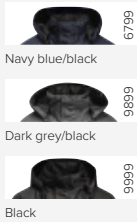


### 1284 Shell Jacket

65128436 - XS-4XL

Wind and waterproof shell jacket with taped seams. Breathable thanks to a layering system. Mesh lining creates a layer of air and supports ventilation. Spacious double chest pockets; two with flaps and velcro closure and two with watertight zip. Front pockets with flap and zip. Three inside pockets, two with mesh and zip, one with velcro closure. Adjustable sleeves and hem. Hood with drawstring, detachable with snap fasteners. Water column: 23000 mm. Breathability: 3300 g/m<sup>2</sup> 24h. Certified according to EN 343 for rainwear.

100% polyester, 200 g/m<sup>2</sup>.

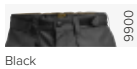


**1384 Winter Jacket**

65138436 - XS-4XL

Wind and waterproof quilted jacket with taped seams. Spacious double chest pockets; two with flaps and velcro closure and two with watertight zip. Front pockets with flap and zip. Three inside pockets, two with zips one with velcro closure. Adjustable sleeves and hem. Reflective details on pockets and on lower back. Quilted hood with drawstring, detachable with snap fasteners. Water column: 23000 mm. Breathability: 3300 g/m<sup>2</sup> 24h. Certified according to EN 343 for rainwear.

100% polyester, 200 g/m<sup>2</sup>.

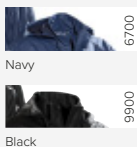


**2934 Shell Trousers**

65293436 - XS-4XL

Wind and waterproof shell trousers with taped seams. Breathable thanks to a layering system. Mesh lining creates a layer of air and supports ventilation. Front pockets with flap and zip. Adjustable at waist and at ankle hem. Water column: 23000 mm. Breathability: 3300 g/m<sup>2</sup> 24h. Matching jacket is 1284. Certified according to EN 343 for rainwear.

100% polyester, 200 g/m<sup>2</sup>.



**6535 Rainsuit**

65653558 - XS-3XL

The jersey fabric is tear-resistant, hardwearing and durable with a stretch function for excellent ease of movement. The soft material also remains flexible even when it's cold. Certified under the EU standard EN343, which means that it is approved under the EU's rules for protection against rain. Sewn and welded seams. Detachable hood with snap fasteners. Velcro cuffs. Front pockets with flap. Adjustable elastic cord in hem. Reflective strips on shoulder and neck. The trousers have an elasticated waist and pocket openings in the front with flaps for easy access to the inside pockets. Certified according to EN 343 for rainwear.

100% polyurethane coated polyester tricot, 170 g/m<sup>2</sup>.

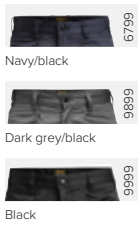


### 2313 Service Trousers

65231320 - C42-64, D84-120

Easy-care polyester/cotton that holds colour and shape. Spacious front pockets. Back pockets with flap and velcro closure. Leg pocket with extra compartment and flap with velcro closure. Ruler pocket. C42-64 can be extended with 5 cm turn-up at ankle hem. F-sizes in colour black.

65% polyester / 35% cotton, 245 g/m<sup>2</sup>.



### 2317 Service Trousers Stretch

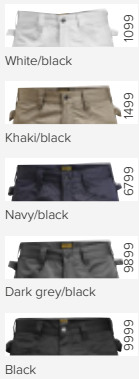
65231720 - C42-64, D84-124

### 2316 Women's Service Trousers Stretch

65231620 - 32-50

Easy-care polyester/cotton that holds colour and shape. Stretch panels at the back for extra flexibility. Spacious front pockets. Back pockets with flap. Leg pocket with extra compartment and flap with velcro closure. Ruler pocket. Trousers can be extended with 5 cm turn-up at ankle hem.

65% polyester / 35% cotton, 245 g/m<sup>2</sup>. Stretch: 90% polyamide/ 10% elastane 240 g/m<sup>2</sup>.



### 2723 Service Shorts

65272320 - C42-64

Easy-care polyester/cotton that holds colour and shape. Spacious front pockets. Back pockets with flap. Leg pocket with extra compartment and flap with velcro closure. Ruler pocket with knife pocket.

65% polyester / 35% cotton, 245 g/m<sup>2</sup>.



Navy/black

6799



Dark grey/black

9899



Black

9999



### 3730 Dungarees

65373020 - C42-64

Easy-care polyester/cotton that holds colour and shape. Chest pockets with flap and velcro closure on the top one. Elasticated braces. Holster pockets with extra compartment and extra zip pocket. Back pockets with flap and velcro closure. Leg pocket with extra compartment and flap with velcro closure. Ruler pocket with knife pocket. Reinforcement on kneepad pockets. C42-64 can be extended with 5 cm turn-up at ankle hem.

65% polyester / 35% cotton, 245 g/m<sup>2</sup>.



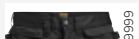
White/black 1099



Navy/black 6799



Dark grey/black 9899



Black/black 9999

Detachable pockets



### 2326 Craftsman Trousers Stretch

65232620 - C42-64, D84-124

Easy-care polyester/cotton that holds colour and shape. Stretch panels at the back for extra flexibility. Spacious front pockets. Holster pockets with extra compartments and extra zip. Back pockets with flap. Leg pocket with extra compartment and flap with velcro closure. Ruler pocket with knife pocket. Reinforcement on kneepad pocket. Kneepads can be fitted in two positions for optimal fit. Trousers can be extended with 5 cm turn-up at ankle hem.

65% polyester / 35% cotton, 245 g/m<sup>2</sup>. Stretch: 90% polyamide / 10% elastane, 240 g/m<sup>2</sup>. Reinforcement; 100% Oxford polyester, 210 g/m<sup>2</sup>.



Black 9999



### 2312 Craftsman Trousers Cotton

65231210 - C42-64, D84-120

Durable cotton with a slightly lower grammage for a lighter weight trouser. Holster pockets with extra compartment and extra zip pocket. Back pockets with flap and velcro closure. Leg pocket with extra compartment and flap with velcro closure. Ruler pocket with knife pocket. Reinforced holster pockets and kneepad pockets. C42-64 can be extended with 5 cm turn-up at ankle hem.

100% cotton, 320 g/m<sup>2</sup>.



Khaki 1400



Brown 1700



Yellow 2100



Red 4100



Sky blue 6300



Navy 6700



Forest green 7500



Dark grey 9800



Black 9900

94



### 9284 Belt

65928424 - 130 CM

Max length of 130 cm, 38 mm wide. Belt with black metal buckle with J logo.

100% polyester.





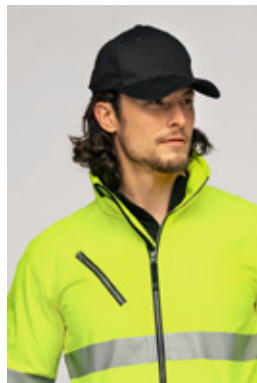
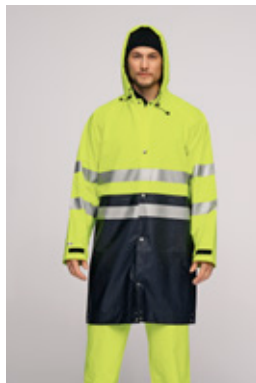




## Practical High Visibility

Jobman's Practical High Visibility family has been developed for workers who need visibility and safety without compromising on comfort or quality. The collection offers a wide range of practical reflective safety gear, specifically designed for workplaces where reflective clothing is a requirement. With simple designs and functional details, the Practical High Visibility range delivers the same high quality that Jobman is known for but at a lower price point.

The clothing is available in a variety of sizes and styles and is designed to keep you safe and comfortable at work – every day.

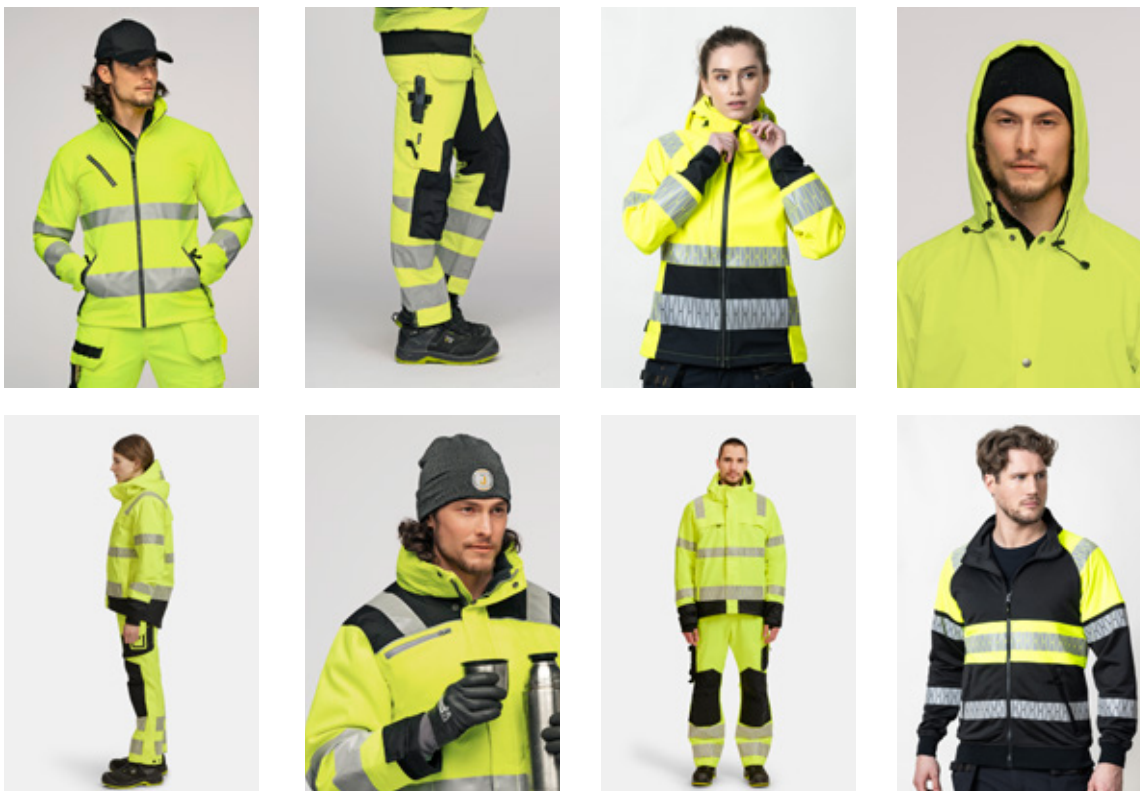




EN ISO 20471

## High-visibility clothing from Jobman Workwear

Designed according to EU standards for maximum safety and visibility.



### Design regulated by EU standard

The design of high visibility clothing is regulated by EU standard EN ISO 20471. It states what colours must be used, where the reflective strips must be located and which information must be included with the garments. Requirements apply to the material's properties to ensure maximum visibility and to enable washing without a loss of visibility. The garments must also be designed a certain way to ensure maximum visibility.

### Tested by selected test institutes

When the garments are approved along with the documentation, a certificate is aware stating that they fulfil the requirements of standard EN ISO 20471. The garments are CE marked indicating certification and featuring information on care and how the garment should be used.

### High visibility clothing is divided into three classes

Garments are divided into different classes depending on their visibility. Classification is mainly dependent on the garment's fluorescent areas and reflective surfaces.

Class 3: Most visible. Total fluorescent area must be at least 0.8 m<sup>2</sup> and the reflective strips 0.2 m<sup>2</sup>.

Class 2: Total fluorescent area must be at least 0.5 m<sup>2</sup> and the reflective strips 0.13 m<sup>2</sup>.

Class 1: Least visible. Total fluorescent area must be at least 0.14 m<sup>2</sup> and the reflective strips 0.1 m<sup>2</sup>.

In all classes, there must be no more than 10 cm between the reflective strips. This means that the zip on a jacket must be closed, for example.

### Can be combined with other garments

It is possible to combine garments from different classes, however combining classes 1 and 2 does not automatically create class 3. To attain class 3, the clothing's total fluorescent area must be at least 0.8 m<sup>2</sup>. Garments of different colours may also be combined. They must, however, be certified together to allow their whole area to be calculated, otherwise only a single garment's area is applicable.

### Yellow is the most visible colour

The EU standard specifies three approved fluorescent colours: yellow, orange and red. The certificate states that the garments are approved for combining. Tests have shown the colour yellow to be twice as luminous as orange or red. Furthermore, yellow is the only one of the three colours which is fluorescent in direct sunlight and sodium light, which is the type of lighting used in tunnels, for example.

### Reflective strips for visibility in the dark

Fluorescent colours lose their luminosity in the dark. Garments therefore have reflective strips to reflect the light from vehicle headlamps in the dark. Reflective strips on the legs mean the wearer can be seen from greater distances.





Yellow/navy 2167



Yellow/black 2199



Orange/black 3199



### 1283 Shell Jacket Hi-Vis

65128362 - XS-4XL

Wind and waterproof shell jacket with taped seams. Breathable thanks to a layering system. Mesh lining creates a layer of air and supports ventilation. Spacious double chest pockets; two with flaps and velcro closure and two with watertight zip. Front pockets with flap and zip. Three inside pockets, two with mesh and zip, one with velcro closure. Adjustable sleeves and hem. Hood with drawstring, detachable with snap fasteners. Water column: 23000 mm. Breathability: 3300 g/m<sup>2</sup> 24h. Certified according to EN 343 for rainwear. Certified Class 3 according to EN ISO 20471.

100% polyester, 200 g/m<sup>2</sup>.



Yellow/navy 2167



Yellow/black 2199



Orange/black 3199



### 1383 Lined Jacket Hi-Vis

65138362 - XS-4XL

Wind and waterproof padded jacket with taped seams. Spacious double chest pockets; two with flaps and velcro closure and two with watertight zip. Front pockets with flap and zip. Three inside pockets, two with mesh and zip, one with velcro closure. Adjustable cuff with velcro. Hood with drawstring, detachable with snap fasteners. Water column: 23000 mm. Breathability: 3300 g/m<sup>2</sup> 24h. Certified according to EN 343 for rainwear. Certified Class 3 according to EN ISO 20471.

100% polyester, 200 g/m<sup>2</sup>.



Yellow 2100

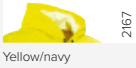


### 2933 Hi-Vis Shell Trousers

65293362 - XS-4XL

Wind and waterproof Hi-Vis shell trousers with taped seams. Breathable thanks to a layering system. Mesh lining creates a layer of air and supports ventilation. Front pockets with flap and zip. Adjustable at waist and at ankle hem. Water column: 23000 mm. Breathability: 3300 g/m<sup>2</sup> 24h. Matching jacket is 1283. Certified according to EN 343 for rainwear. Certified Class 2 according to EN ISO 20471.

100% polyester, 200 g/m<sup>2</sup>.



Yellow/navy

2167

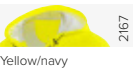


### 1565 Raincoat Hi-Vis

65156558 - S-XXL

Hardwearing raincoat certified in hi-vis class 3. Certified according to EU standard EN 343, which means that it is approved under the EU's rules for protection against rain. Sewn and welded seams. 100 cm long in Large. Hood with cord. Adjustable sleeves. Sewn and welded seams. Certified according to EN 343 for rainwear. Certified Class 3 according to EN ISO 20471.

100% polyurethane coated polyester tricot, 170 g/m<sup>2</sup>.



Yellow/navy

2167

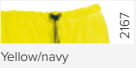


### 1566 Raincoat Hi-Vis

65156658 - S-3XL

Hardwearing raincoat certified in hi-vis class 3. Certified according to EU standard EN 343, which means that it is approved under the EU's rules for protection against rain. Sewn and welded seams. Zip with storm flap. Hood with cord. Large front pockets. Adjustable sleeves and waist. Raincoat is 80 cm long in size Large. Certified according to EN 343 for rainwear. Certified Class 3 according to EN ISO 20471.

100% polyurethane coated polyester tricot, 170 g/m<sup>2</sup>.



Yellow/navy

2167



### 2546 Rain Trousers Hi-Vis

65254658 - S-XXL

Hardwearing rain trousers certified in Class 2. Certified according to EN 343, which means that it is approved under the EU's rules for protection against rain. Sewn and welded seams. Elasticated with drawstring at the waist. Adjustable legs. Certified according to EN 343 for rainwear. Certified Class 2 according to EN ISO 20471.

100% polyurethane coated polyester tricot, 170 g/m<sup>2</sup>.





Yellow 2100



Orange 3100



### 1202 Softshell Jacket Hi-Vis 1210 Women's Softshell Jacket Hi-Vis

65120255 - XS-4XL

65121055 - XS-2XL

Tripled-layered softshell jacket with fleece inside. Windproof and water repellent. Chest pocket with zip and ID card pouch. Spacious front pockets with zip. Elasticated cuffs with thumb grip. Drawstring hem. YKK front zip. Certified Class 3 according to EN ISO 20471.

100% polyester, 280 g/m<sup>2</sup>.



Yellow 2100



Orange 3100



### 5101 Softshell Light Jacket Hi-Vis

65510155 - XS-4XL

Comfortable twin-layered lightweight water repellent softshell. Heat-pressed seamless reflective strips. Reflective strips on shoulders, visible from above. Chest pocket with zip. Spacious front pockets with zip. Elasticated cuffs with thumb grip. Elasticated hem. YKK front zip. Certified Class 3 according to EN ISO 20471.

100% polyester, 280 g/m<sup>2</sup>.



Yellow 2100



Orange 3100



### 5502 Fleece Jacket Hi-Vis

65550275 - XS-4XL

Soft and comfortable fleece. Open inside pockets. Spacious front pockets with zip. Elasticated cuffs with thumb grip. Elasticated hem. Certified Class 3 according to EN ISO 20471.

100% polyester, 260 g/m<sup>2</sup>.







Yellow

2100



Orange

3100



### 1150 Sweatshirt Hi-Vis

65NO115065 - XS-4XL

Hi-vis sweatshirt with brushed inside. Ribbed neckline, hem and cuffs. Heat-pressed seamless reflective strips. Reflective strips on shoulders, visible from above. Certified Class 3 according to EN ISO 20471.

65% polyester / 35% cotton, 300 g/m<sup>2</sup>.



Yellow

2100



Orange

3100



### 7586 Vest Hi-Vis

65758664 - S/M, L/XL, XXL/3XL

Smooth high visibility vest, handy to keep in car or for visitors. Closes with a zip. Certified Class 2 according to EN ISO 20471.

100% polyester, 120 g/m<sup>2</sup>.



Yellow

2100



Orange

3100



### 7598 Vest Hi-Vis

65759864 - S/M, L/XL, XXL/3XL

Advanced, comfortable hi-vis vest. The sleeves have velcro, making it possible to wear the vest over a jacket. Adjustable elasticated waist. Two chest pockets with velcro closure; top with phone pocket and ID card pouch, bottom with pen compartment. Two radio holders on chest. Certified Class 3 according to EN ISO 20471.

100% polyester, 120 g/m<sup>2</sup>.



Yellow 2121



Orange 3131



**5592 Polo Shirt Hi-Vis**

65559251 - XS-4XL

Comfortable, functional polo shirt with a good fit in polyester. Quickly transports moisture away from the skin and dries fast. Heat-pressed seamless reflective strips with gaps at side seam for increased flexibility and comfort. Reflective strips on the shoulders for optimal visibility. Button placket with three buttons and rib-knitted collar. Certified Class 2 according to EN ISO 20471 – Size L-4XL. Certified Class 2 according to EN ISO 20471 – Size XS-M.

100% polyester, 160 g/m<sup>2</sup>.



Yellow 2121



Orange 3131



**5591 T-shirt Hi-Vis**

65559151 - XS-4XL

Comfortable, functional T-shirt with a good fit in polyester. Quickly transports moisture away from the skin and dries fast. Heat-pressed seamless reflective strips with gaps at side seam for increased flexibility and comfort. Reflective strips on the shoulders for optimal visibility. Certified Class 3 according to EN ISO 20471 – Size L-4XL. Certified Class 2 according to EN ISO 20471 – Size XS-M. Oeko-Tex.

100% polyester, 160 g/m<sup>2</sup>.



Yellow 2121



Orange 3131



**5593 Long sleeve T-shirt Hi-Vis**

65559351 - XS-4XL

Comfortable, functional, long-sleeved T-shirt with a good fit in polyester, quickly transports moisture away from the skin and dries fast. Heat-pressed seamless reflective strips with gaps at side seam for increased flexibility and comfort. Reflective strips on the shoulders for optimal visibility. Neckline and cuffs in the same material as the shirt. Certified Class 3 according to EN ISO 20471 – Size M-4XL. Certified Class 2 according to EN ISO 20471 – Size XS-S. Oeko-Tex.

100% polyester, 160 g/m<sup>2</sup>.



Yellow/Navy

2167



Yellow/Black

2199



### 2378 Service Trousers Hi-Vis

65237862 - C42-64, D84-120

Easy-care polyester/cotton that holds colour and shape. Back pockets with flap and velcro closure. Leg pocket with extra compartment and flap with velcro closure. Ruler pocket with knife pocket. Reinforcement on kneepad pockets. C42-64 can be extended with 5 cm turn-up at ankle hem. Certified Class 2 according to EN ISO 20471.

80% polyester / 20% cotton, 245 g/m<sup>2</sup>.



Yellow/navy

2167



Yellow/black

2199



Orange/black

3199



### 2377 Craftsman Trousers Hi-Vis

65237762 - C42-64, D84-120

Easy-care polyester/cotton that holds colour and shape. Holster pockets with extra compartment and extra zip pocket. Back pockets with flap and velcro closure. Leg pocket with extra compartment and flap with velcro closure. Ruler pocket with knife pocket. Reinforced holster pockets and kneepad pockets. C42-64 can be extended with 5 cm turn-up at ankle hem. Certified Class 2 according to EN ISO 20471.

80% polyester / 20% cotton, 245 g/m<sup>2</sup>.



Yellow

2100



Orange

3100

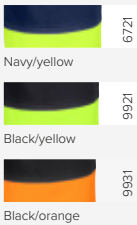


### 2205 Craftsman Shorts Hi-Vis

65220562 - C42-64

Hi-vis shorts, certified Class 1 in C42-46 sizes. Certified Class 2 from C48. Easy-care polyester/cotton that holds colour and shape. Holster pockets with extra compartment and extra zip pocket. Back pockets with flap and velcro closure. Leg pocket with extra compartment and flap with velcro closure. Ruler pocket with knife pocket. Reinforcement in holster pockets. Certified Class 2 according to EN ISO 20471 – from C48. Certified Class 1 according to EN ISO 20471 – in C42-46.

80% polyester / 20% cotton, 240 g/m<sup>2</sup>.

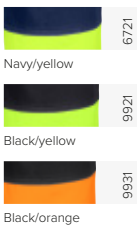


**2277 Craftsman Trousers Hi-Vis**

65227710 - C44-62, D84-120

Durable cotton with a slightly lower grammage for a lighter weight trouser. Holster pockets with extra compartment and extra zip pocket. Back pockets with flap and velcro closure. Leg pocket with extra compartment and flap with velcro closure. Ruler pocket with knife pocket. Reinforced holster pockets and kneepad pockets. C44-62 can be extended with 5 cm turn-up at ankle hem. Certified Class 1 according to EN ISO 20471.

100% cotton, 320 g/m<sup>2</sup>.

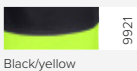


**2314 Service Trousers Hi-Vis**

65231420 - C42-64, D84-120

Hi-vis trousers in easy-care polyester/cotton for service work. Spacious front pockets. Back pockets with flap and velcro closure. Leg pocket with extra compartment and flap with velcro closure. Ruler pocket. C42-64 can be extended with 5 cm turn-up at ankle hem. Certified Class 1 according to EN ISO 20471.

65% polyester / 35% cotton, 245 g/m<sup>2</sup>.



**2513 Craftsman Trousers Hi-Vis**

65251320 - C42-64, D84-120

Hi-vis trousers in easy-care polyester/cotton for craft work. Holster pockets with extra compartment and extra zip pocket. Back pockets with flap and velcro closure. Leg pocket with extra compartment and flap with velcro closure. Ruler pocket with knife pocket. Reinforced holster pockets and kneepad pockets. C42-64 can be extended with 5 cm turn-up at ankle hem. Certified Class 1 according to EN ISO 20471.

65% polyester / 35% cotton, 245 g/m<sup>2</sup>.



## Accessories & Knee Pads

Jobman Workwear's accessories & knee pads provide extra protection and comfort in the workplace. Our products are designed to last and to give you support throughout the entire workday.



Black

9999



**8001 Reflective Beanie**

65800183 - ONE SIZE

Knitted beanie with fold-up. Reflective yarn mixed with regular yarn gives a melange effect and illuminated gives the whole garment a reflective look. Jobman's reflective label stitched on at the front.

100% acrylic.



Yellow

2100



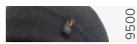
Orange

3000



Red

4100



Anthracite

9500



Black

9900



**9043 Beanie**

65904383 - ONE SIZE

Knitted beanie with 7 cm fold up. Can be worn with or without folding up.

100% acrylic.



White

1000



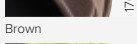
Khaki

1400



Brown

1700



Yellow

2100



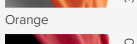
Orange

3100



Red

4100



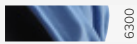
Sky blue

6300



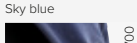
Navy

6700



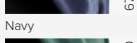
Forest green

7500



Dark grey

9700



Black

9900



**9040 Beanie**

65904083 - ONE SIZE

Lightweight, comfortable beanie in single jersey with soft fleece lining.

100% cotton, lining 100% polyester fleece.





Black



### 9062 Cap

65906283 - ONESIZE

Cap in brushed cotton twill with pre-curved brim. The size can be adjusted at the back.

100% cotton.



Black

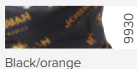


### 9692 Balaclava

65969284 - ONE SIZE

Helmet hood in knitted material.

100% polyester.



Black/orange



### 9693 Bandana

65969384 - ONE SIZE

Bandana with all-over print. Collar with many function e.g. scarf, collar, hat.

100% polyester.





9900

Black



**9291 Belt**

65929184 - ONE SIZE

Maximum length 130 cm. Heat-embossed print with 'JOBMAN'.  
38 mm wide. Metal buckle with 'J' logo and built-in bottle opener.  
100% polyester.



**9282 Stretch Belt "No scratch"**

65928284 - 90 CM, 120 CM

Belt "No scratch" in polyester with stretch feature for extra comfort. 35 mm wide. Plastic buckle reduces risk of scratches.

100% polyester.

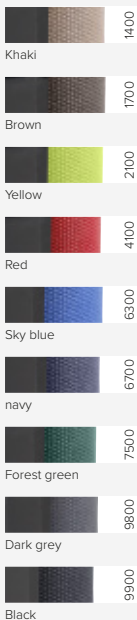


**9307 Leather Belt**

65930784 - ONE SIZE

Leather belt, 36 mm wide. Sturdy buckle with steel pin.

100% leather.



**9284 Belt**

65928424 - 130 CM

Max length of 130 cm, 38 mm wide. Belt with black metal buckle with J logo.

100% polyester.





Black

**9011 Braces****65901184 - ONE SIZE**

Braces with clips. Elastic. Adjustable length. 50 mm wide. Jobman logo.

70% polyester / 30% elastane.



Yellow



Black

**9013 Braces "No scratch"****65901384 - 125 CM**

Braces with plastic clips, reduces risk of scratches. Elastic. Adjustable length. 40 mm wide.

70% polyester / 30% elastane.

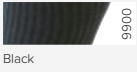


Black

**9916 ID Card holder****65991684 - ONE SIZE**

Practical ID card holder. Easy to insert and remove the card.

Plastic.



Black



### 9596 2-P Socks

65959687 - 35-38, 39-42, 43-46

Comfortable sock in Cotton/ polyamide blend with stretch. Mesh knitted areas for good ventilation. Pack of 2 pair.

80% Cotton, 15% Polyamide, 5% elastane



Black



### 9597 Merino Sock Medium

65959788 - 37-39, 40-42, 43-45, 46-48

Comfortable Merino sock. Medium thick.

47% Merino Wool, 52% Recycled Polyamide, 1% Lycra



Dark grey/Black



### 9598 Merino Sock Heavy

65959889 - 37-39, 40-42, 43-45, 46-48

Heavy merino sock for cold days.

50% Merino Wool, 32% Recycled Polyamide, 17% Polyamid, 1% Lycra,



9900

Black



### 9946 Kneepads

65994684 - 240 X 147 MM

Light weight kneepads, shaped after the leg, perfect for all new trousers with slimmer leg width.

Polyolefin foam with the addition of ethylene vinyl acetate



3099

Orange/black



### 9943 Kneepads

65994384 - ONE SIZE

Lightweight kneepad for workers on the move who occasionally need to use kneepads. Pre-bent for improved fit and comfort. EVA (Ethylene Vinyl Acetate) for best shock absorption. Harder exterior for increased durability and lifetime. Certified according to EN 14404: 2004 + A1: 2010, Type 2, Level 1 together with most Jobman trousers.

EVA + LDPE



9799

Grey/black



### 9944 Kneepad

65994484 - ONE SIZE

Kneepad for frequent users who do work kneeling down but not all day. Pre-bent for improved fit and comfort. EVA (Ethylene Vinyl Acetate) for best shock absorption. Tougher exterior for increased durability and lifetime. Certified according to EN 14404:2004+A1:2010, Type 2, Level 1 together with most Jobman trousers.

PE/EVA/RUBBER/POE





# Symbols



## Oeko-Tex

Oeko-Tex is an internationally defined standard based on a voluntary commitment. To obtain the certification, the entire manufacturing process and all components of a garment must meet high human ecological requirements. Many of our garments are Oeko-Tex certified, which means it is a guarantee that the garments do not contain substances that could be harmful to the wearer upon skin contact.



## High-visibility class

Garments are divided into classes depending on their visibility. Classification is mainly dependent on its conspicuity: the garment's fluorescent area and retro-reflective surface.

Class 3: Highest class. The total fluorescent area must be at least 0.8 m<sup>2</sup> and the reflective strips 0.2 m<sup>2</sup>.

Class 2: The total fluorescent area must be at least 0.5 m<sup>2</sup> and the reflective strips 0.13 m<sup>2</sup>.

Class 1: The lowest class. The total fluorescent area must be at least 0.14 m<sup>2</sup> and the reflective strips 0.1 m<sup>2</sup>.



## Kneepads

Trousers with the symbol are certified according to EN 14404: 2004 + A1: 2010 Type 2 Level 1 together with Jobman kneepads 9943, 9944 and 9945.



## Flameproof

100% cotton with flame-retardant treatment. CE-certified, tested and approved in accordance with EN ISO 11611 and EN ISO 11612. Certification means that the material and the garment's design protects against edge ignition, flame spread and melting. It can also withstand heat according to the test standards, preventing burns.



## Cold

Garments certified in accordance with EN 342 keep you protected from cold ( $\leq -5^{\circ}\text{C}$ ). Requirements refer to thermal insulation and air permeability. Certifications for the garment set apply in combination with Jobman underwear set and fleece jacket.



## Rain

All Jobman's rainwear is certified according to the EU EN 343 standard, the bad weather certificate.



## Breathability

The symbol shows that the fabric is windproof, waterproof and breathable. For optimum comfort at work, it is important that the body maintains an even temperature and remains dry. A shell garment lets the body breathe and lets out excess moisture that would otherwise have a cooling effect.



## 4-Way Stretch

The symbol shows that the entire or most of the garment is made with 4-way stretch.



## Layering

In cold weather it is important to wear layers of clothing to keep warm. Practical layers you can add or take off are especially important when moving between warm and cold spaces.



1. The first layer (layer 1) should transport humidity out to the next layer. Ideally, technical underwear of man-made materials.



2. The middle layer (layer 2) should be insulating fleece, softshell or furry material. Jobman's microfleece garments are extremely comfortable and ideal middle layers.



3. The third layer (layer 3) should be windproof and water repellent to protect you, but must be able to breathe and allow humidity from the first two layers to evaporate.

## Dry-Tech™

The symbols mean that the clothing is moisture-wicking.



## Panels

The symbol shows that parts of the garment are made with 4-way stretch.





# Washing & care instructions

## Washing

Always follow Jobman's washing instructions shown on the garment. This ensures that the garment's protective features are not compromised or destroyed. Sort first according to the wash temperature and colour, then according to the other washing instructions. Garments marked "wash separately" may discolour or be discoloured by other garments.

## Washing detergent

Use colour-safe washing detergent with coloured garments and follow the dosing instructions on the packaging. Do not use washing detergent containing bleach. Jobman does not recommend rinsing or the use of fabric softeners.

## Drying

Most of the garments feel better when hung to dry. Shake the garment and hang it up. When tumble drying, do not dry the garments completely. This can cause significant shrinkage and wear.



Your Jobman workwear will last longer if you wash and care for it properly.



# CSR & Sustainability

At Jobman, we place great emphasis on sustainability and take responsibility for how our operations affect both people and our planet. Of course, we hope that you are satisfied with our products and also with us as a company. As a part of New Wave Group, we pursue an active sustainability work towards a vision of sustainable growth where business solutions are not only financially profitable, but also sustainable from a social and environmental perspective. What makes the biggest difference is how we conduct our everyday business. That is why we integrate sustainability into our core operations and processes. The work includes, amongst several things, improved working conditions in production countries, a progressive work with chemicals and streamlining transport and logistics.

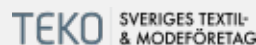
We invite you to take part of our work at group level with CSR and sustainability. More information is available in New Wave Group Sustainability Report, where we highlight important activities, achievements and ambitions for the future. You find it on New Wave's website [www.nwg.se/csr/](http://www.nwg.se/csr/)



**Amfori BSCI (Business Social Compliance Initiative)**

Amfori BSCI is a business driven initiative for companies committed to improve working conditions in the global supply chain. Our Code of Conduct have requirements on minimum wage, working hours, the prohibition of child labour and several other important criteria.

[amfori.org/content/amfori-bsci](http://amfori.org/content/amfori-bsci)



**Swedish Textile & Clothing Industries' Association**

Jobman Workwear is a member of the environmental group at TEKO. TEKO, Swedish Textile and Clothing Industries' Association is the joint industry and employers' organization for the Swedish textile and clothing industry. The members have regular meetings and discuss e.g REACH, sustainable materials, packaging, eco-labeling, permit processes.

[www.teko.se](http://www.teko.se)



**Textile Exchange**

Textile Exchange is an international non-profit organization working for responsible expansion of the textile industry and the organic cotton production.

[textileexchange.org](http://textileexchange.org)



**The Swedish Chemicals Group**

The Chemicals Group is arranged by RISE, a world leading research group with a key role in the Swedish innovation system. In this network we receive the most updated information on chemical legislations and developments.

[kemikaliegruppen.se](http://kemikaliegruppen.se)



**Clean Shipping Index**

The Clean Shipping Index aims to ensure shipping companies use cleaner vessels by ranking the most highly-performing ships. Transport buyers can use the Clean Shipping Index to calculate and minimise their environmental footprint.

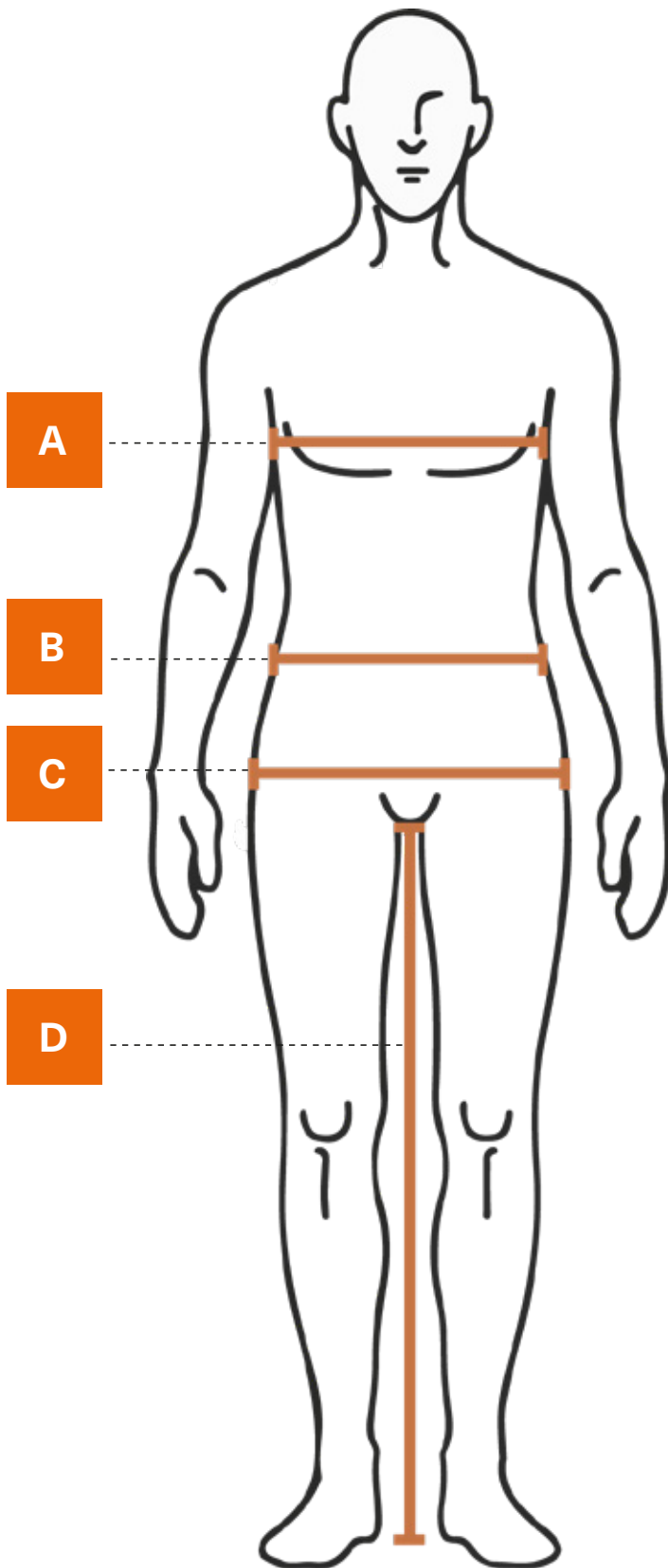
[cleanshippingindex.com](http://cleanshippingindex.com)



**Amfori BSCI (Business Social Compliance Initiative)**

Amfori BSCI is a business driven initiative for companies committed to improve working conditions in the global supply chain. Our Code of Conduct have requirements on minimum wage, working hours, the prohibition of child labour and several other important criteria.

[amfori.org/content/amfori-bsci](http://amfori.org/content/amfori-bsci)



## Size Guide

Jobman offers a wide range of sizes, particularly for trousers. It is important to choose the right leg length for trousers with kneepad pockets, so that they are correctly positioned on the leg. All of our men's trousers are available in three size categories. C sizes with normal leg length, e.g. C50, C sizes with long leg, e.g. C150, and D sizes with short leg, e.g. D96.

If you are not able to try on the clothes in the shop, you can take your measurements to ascertain the right size. Take your measurements while wearing close-fitting underwear and do not pull the measuring tape too tight. See the size chart on the next page.

### A - Chest

Measure the circumference around your torso at the widest part of the chest/bust.

### B - Waist

Measure the circumference at the same level as your belly button or at the narrowest part.

### C - Hip

Measure the circumference around your hip at the widest part.

### D - Inside Leg

Measure from the crotch down to the sole of your foot. Make sure the tape is straight.

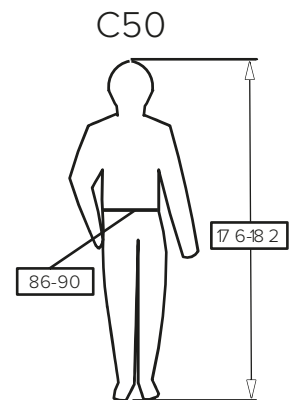
## Men's Sizes

	<b>XS</b>		<b>S</b>		<b>M</b>		<b>L</b>		<b>XL</b>		<b>XXL</b>		<b>3XL</b>		<b>4XL</b>		<b>5XL</b>	
	C40	C42	C44	C46	C48	C50	C52	C54	C56	C58	C60	C62	C64	C66				
<b>A</b> Bust	80	84	88	92	96	100	104	108	112	116	120	124	128	132	136	140	144	148
<b>B</b> Waist	68	72	76	80	84	88	92	97	102	108	114	120	126	132	134	138	143	147
<b>C</b> Hip	86	90	94	98	102	106	110	114	118	122	126	130	134	138				
<b>D</b> Inside leg	76	77	78	79	80	81	82	83	84	84	85	85	86	86				
Inch	27/30	28/30	29/30	30/32	31/32	32/32	34/34	36/34	38/34	40/34	42/34	44/34	46/34	48/34				

		D84	D88	D92	D96	D100	D104	D108	D112	D116	D120	D124
<b>A</b> Bust		84	88	92	96	100	104	108	112	116	120	124
<b>B</b> Waist		78	82	86	90	94	98	103	108	114	120	126
<b>C</b> Hip		92	96	100	104	108	112	116	120	124	128	132
<b>D</b> Inside leg		71	72	73	74	75	76	77	78	78	79	79
Inch		29/30	30/30	31/30	32/30	34/30	36/32	40/32	40/32	42/32	44/32	46/32

			C144	C146	C148	C150	C152	C154	C156
<b>A</b> Bust			88	92	96	100	104	108	112
<b>B</b> Waist			76	80	84	88	92	97	102
<b>C</b> Hip			94	98	102	106	110	114	118
<b>D</b> Inside leg			83	84	85	86	87	88	89
Inch			29/34	30/34	31/34	32/34	34/34	36/34	36/36

		F124	F128	F132	F136	F140
<b>A</b> Bust		124	128	132	136	140
<b>B</b> Waist		131	137	143	149	155
<b>C</b> Hip		137	141	145	149	153
<b>D</b> Inside leg		80	80	81	81	81



### Pictogram

Every CE-marked garment must have a label bearing a pictogram that shows the measurement range for the garment. This allows you to check inside the garment to make sure it's the right size.

## Women's Sizes

	<b>XS</b>		<b>S</b>		<b>M</b>		<b>L</b>		<b>XL</b>		<b>XXL</b>	
	32	34	36	38	40	42	44	46	48	50	52	54
<b>A</b> Bust	76	80	84	88	92	96	100	104	108	112	116	120
<b>B</b> Waist	60	64	68	72	76	80	84	88	92	96	100	104
<b>C</b> Hip	84	88	92	96	100	104	108	112	117	122	128	132
<b>D</b> Inside leg	78	79	79	79	80	80	80	80	81	81	81	81
Inch	24/30	26/30	27/30	28/32	29/32	30/32	31/32	32/32	34/32	34/32	38/32	40/32

The measurements correspond to your body measurements except for the inside leg, which is the length of the garment (inside leg, crotch to ankle).

# Index

Art Nr.	Page	Art Nr.	Page	Art Nr.	Page
1035	64	1566	102	2303	14
1040	67	2092	61	2312	94
1041	67	2129	76	2313	92
1092	58	2133	79	2314	109
1150	106	2134	52	2316	92
1179	42	2164	50	2317	92
1201	87	2167	50	2318	39
1202	104	2168	50	2319	39
1203	87	2171	76	2321	89
1210	104	2179	76	2322	89
1235	28, 68	2181	51	2326	94
1283	101	2191	48	2328	24
1284	90	2194	49	2329	24
1317	88	2195	48	2358	79
1335	64	2196	48	2362	79
1347	70	2200	51	2371	36
1357	67	2201	51	2372	24
1359	70	2205	108	2377	108
1372	32	2217	27	2378	108
1374	32	2235	29, 69	2391	36
1375	32	2236	71	2392	24
1376	24	2240	70	2397	39
1377	24	2271	27	2513	109
1383	101	2277	109	2546	102
1384	91	2291	27	2570	73
1391	32	2296	27	2718	39
1565	102	2302	14	2719	39

Art Nr.	Page	Art Nr.	Page	Art Nr.	Page
2722	89	5178	35	5620	46
2723	92	5224	20	5901	83
2732	51	5225	20	6535	91
2733	53	5226	20	6579	73
2933	101	5230	76	7501	83
2934	91	5264	86	7502	87
2935	64	5265	86	7507	88
3730	93	5268	36	7517	88
4037	57	5303	47	7586	106
4145	53	5304	47	7598	106
4327	53	5324	23	8001	111
4334	67	5325	23	9011	115
5101	104	5326	23	9013	115
5120	10	5400	84	9040	111
5130	13	5401	85	9043	111
5138	42	5402	85	9062	112
5139	45	5403	85	9282	114
5140	35	5501	83	9284	94, 114
5141	35	5502	104	9291	113
5150	46	5564	87	9307	114
5152	47	5566	36	9596	116
5154	45	5567	36	9597	116
5155	46	5570	73	9598	116
5157	42	5591	107	9692	112
5158	35	5592	107	9693	112
5161	32	5593	107	9916	115
5177	47	5601	45	9943, 9944, 996	117

FIFTY YEARS OF DURABILITY AT WORK



EST 1975

50

JOBMAN  
WORKWEAR











**JOBMAN**

WORKWEAR

DURABILITY AT WORK SINCE 1975